

'Children First' Pilot – Ely & Caerau

Ruth McDonald

ACE Action in Caerau & Ely

Email: ruthmc@elycaerau.com

October 2017





communities first *cymunedau yn gyntaf*

The Communities First Learning Team 2015-16

- Schools & Community Learning Coordinator
- Family Learning Officer
- Community Focused Schools Officer
- Post 16 & Adult Learning Coordinator
- KS4 Youth Progression Mentor (PDG Match)
- Family Liaison Officer (PDG Match)

Ely Caerau Schools & Partners



Communities First Priorities:

- Prosperity
- Health
- Learning

IT'S REALLY HAPPENING!

New School Community Celebration

You are invited to a Community Celebration Event where the name and plans will be revealed for the new secondary school that will open in Ely & Caerau in 2017.

Western Leisure Centre
3.30-6pm Monday 14th November 2016



To cast your vote for the new name or make your own suggestion visit

www.nameyourschool.co.uk





Communication with key stakeholders:

- Head teachers
- School staff
- Local Authority officials
- Third sector
- Public Services

- Welsh Government
- Parents
- Pupils
- Community members
- Local businesses



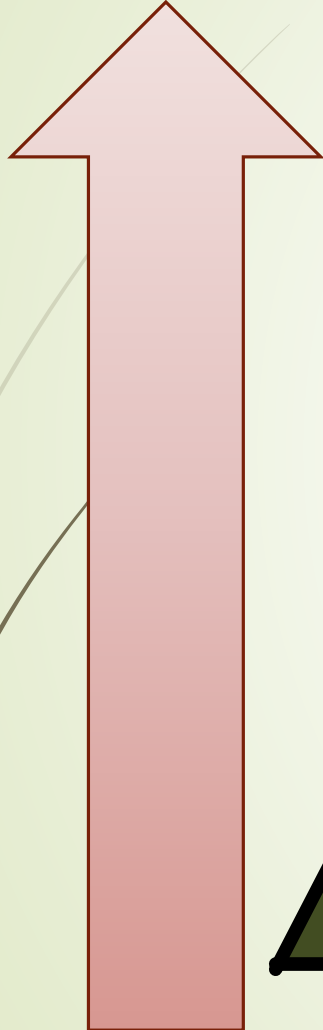
WG Oral Statement – Resilient Communities

‘We can do more in our communities to protect the damage caused by ACEs. I am inviting organisations to join with us to develop Children’s Zones for Wales, collaborating seamlessly to improve children’s and young people’s outcomes. This, along with the continuation of Flying Start and Families First will support disadvantaged children to get the best possible start in life.’

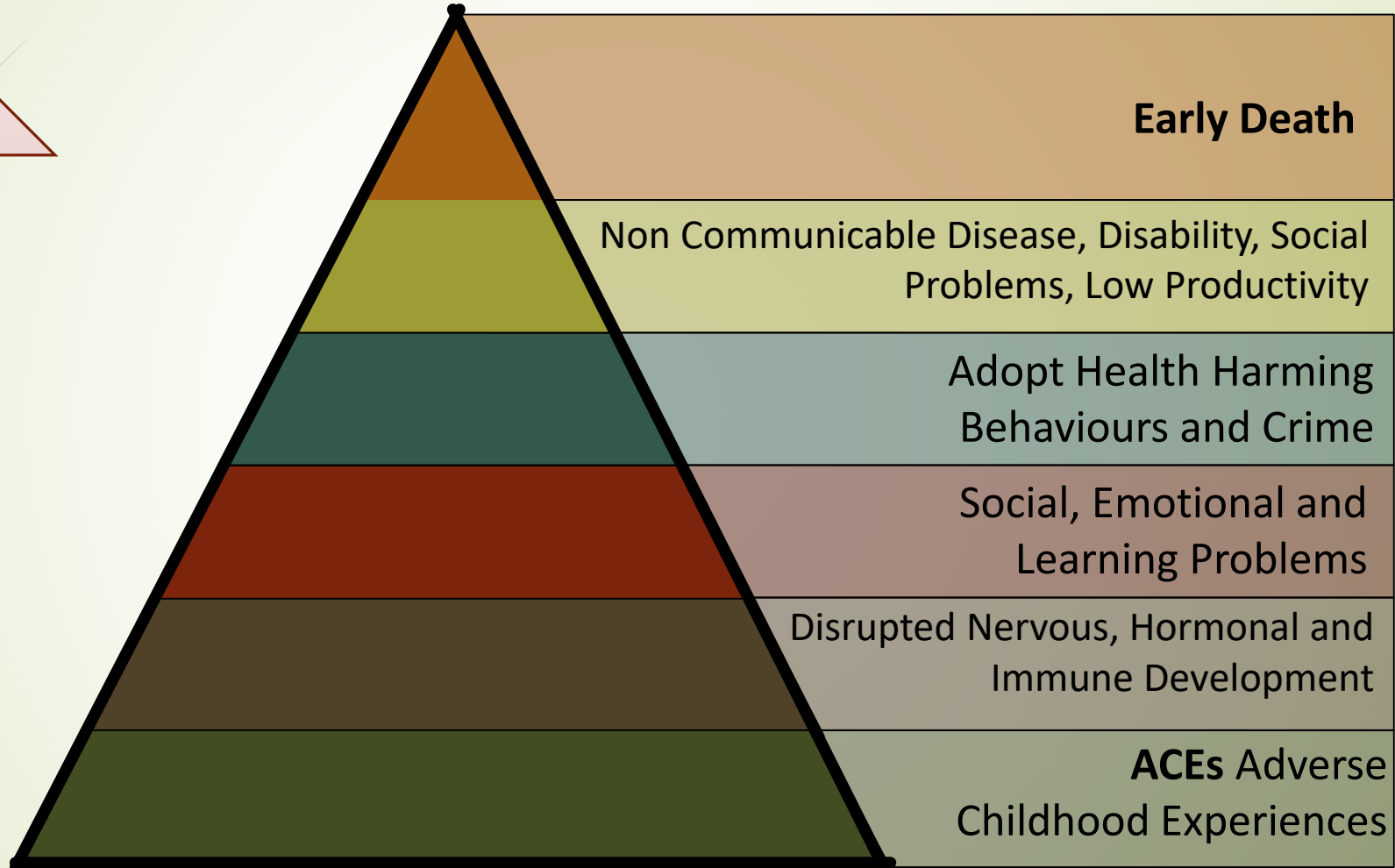
October 2016

ACEs – The Life Course

DEATH



BIRTH



Developed from Felitti et al. 1998

Save the Children - Pembury Children's Community

The Pembury estate in Hackney is a disadvantaged estate based in a thriving city. Local schools and services are relatively strong and the local economy presents many opportunities for Pembury residents. A key role of the Children's Community is to help children and families benefit fully from these services and opportunities and to prevent them falling through any gaps in service provision.

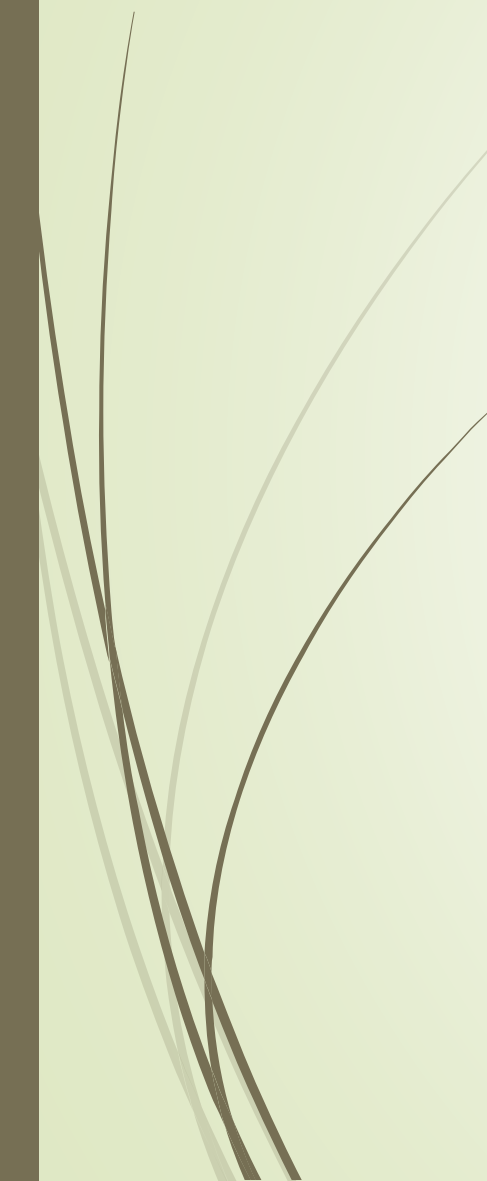

As such, the Children's Community's theory of change has two distinct but interlinked approaches:

- Aiming to support personal, family and community development so that people are better able to help themselves and one another
- Aiming to improve access to local services and more clearly join the dots between them where necessary.




Ely & Caerau 'Children First' Proposal – September 2017

Vision - 'A long-term place based approach to improve the lives of children, young people and their families, building a resilient and vibrant community.'



The lack of a single recognised approach across Ely & Caerau lends itself to, at best, a duplication of effort and resources and, at worst, no provision at all for some children, young people and families in need.



Children's problems do not fall into neat boxes and at the moment there isn't a clear pathway to promote connectivity between organisations and agencies.

The establishment of a long-term, multi-agency single approach would maximise current resources as the way forward to improving outcomes for children, in order to minimise the effects of ACEs on children and families.



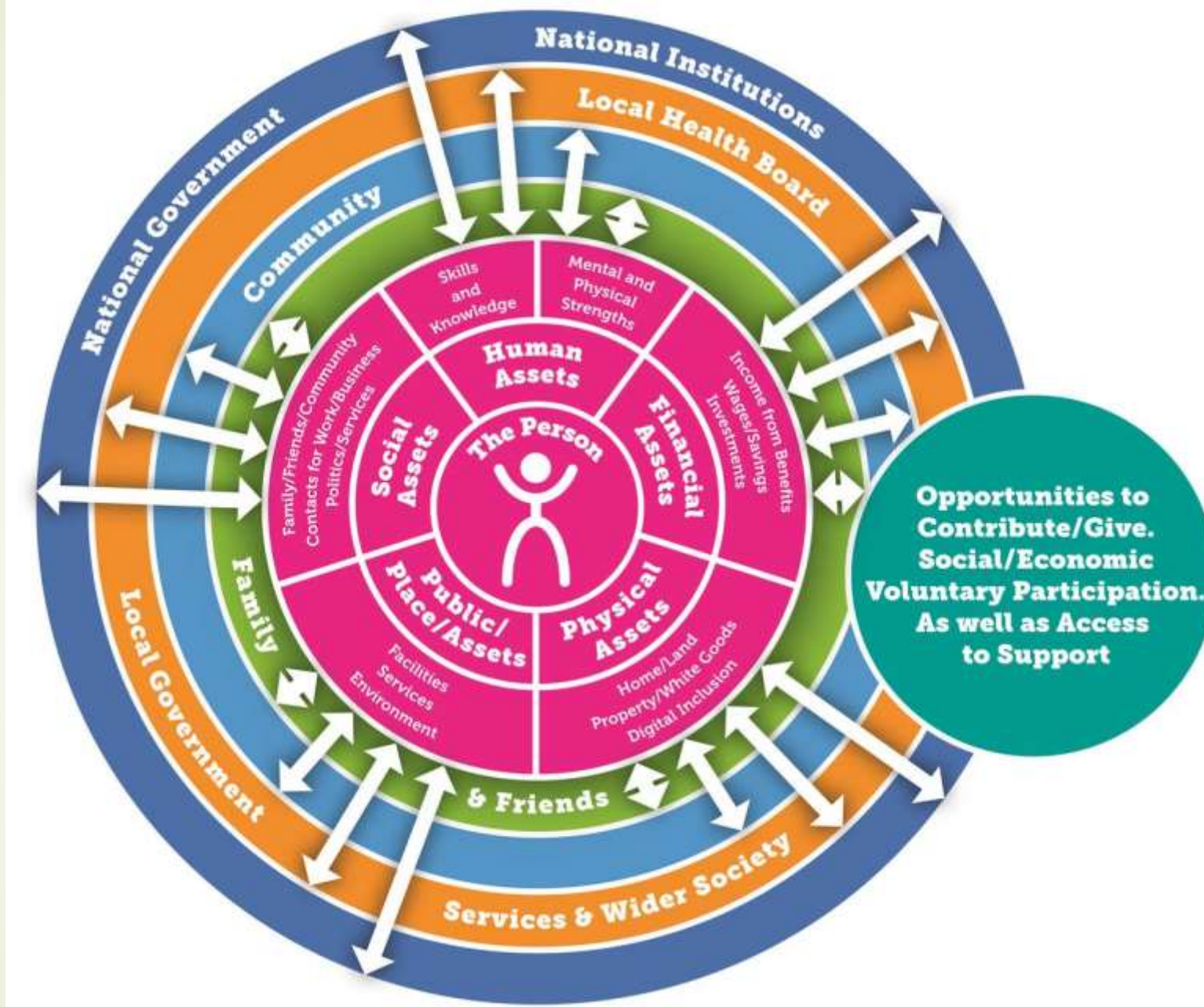
Community Engagement Approach:

Co-Production Approach -

enables citizens and professionals to share power and work together in equal and reciprocal relationships.

Collaborative Community Action Research -

Conduct a listening project – this information will encourage collaboration and cooperation between local people, organisations and the public and private sectors.



Putting the citizen at the centre (O'Hara-Jakeway, 2017, *Humanising Services and Building Communities*,)



Impact

- A single shared outcome framework
- Fewer looked after children
- More effective use of resources
- Collaboration & co-produced services
- Better educational attainment
- Positive outcomes for young people



Next Steps

- Mapping current services
- Identify gaps and duplication of services
- Connect with relevant research expertise
- Organise community listening events
- Identify community strengths & assets
- Identify and establish strategy group
- Visit existing models
- Communication plan

Strategic planning:





**“Failure
is success
if we learn
from it.”**

—Malcolm Forbes

Journal of Health