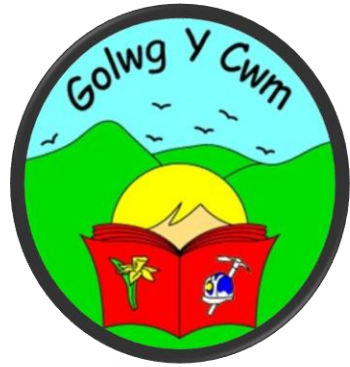


# Gweithio gyda Phartneriaid a Gwasanaethau a Gyd-leolir Working with Partners and Co-located Services



Pennaeth | Head teacher: Mrs Judith Hickey

Rheolwr Ysgolion Bro | Community Focussed Schools Manager: Adele Evans

**CRYFACH** *tecach* **GWYRDDACH**  **STRONGER** *fairer* **GREENER**



**Powys**

## Gwybodaeth am yr ardal

- 211 o blant ar y gofrestr
- 31% yn cael Prydau Ysgol am Ddim
- 45% o Ddisgyblion gydag Anghenion Dysgu Ychwanegol

Roedd Ystradgynlais 1 yn y **117** safle o blith 1909 AGEHI yng Nghymru, sy'n golygu ei fod ymhlith y **10% o'r wardiau mwyaf difreintiedig yng Nghymru.**

### Mynegai Amddifadedd Lluosog Cymru

Ystradgynlais yw'r **1af** allan o 79 AGEHI o fewn Awdurdod Lleol Powys

Ysgol Golwg Y Cwm yn Ysgol Fro

## Information about the area

- 211 children on roll
- 31% FSM
- 45% of Pupils have ALN

Ystradgynlais 1 Ranked **117** out of 1909 Lower Super Output Areas in Wales, which places it among the **10% most deprived wards in Wales**

### Welsh Index Multiple Deprivation

Ystradgynlais 1 is Ranked **1** out of 79 LSOAs in the Powys

Ysgol Golwg Y Cwm is a community focussed school

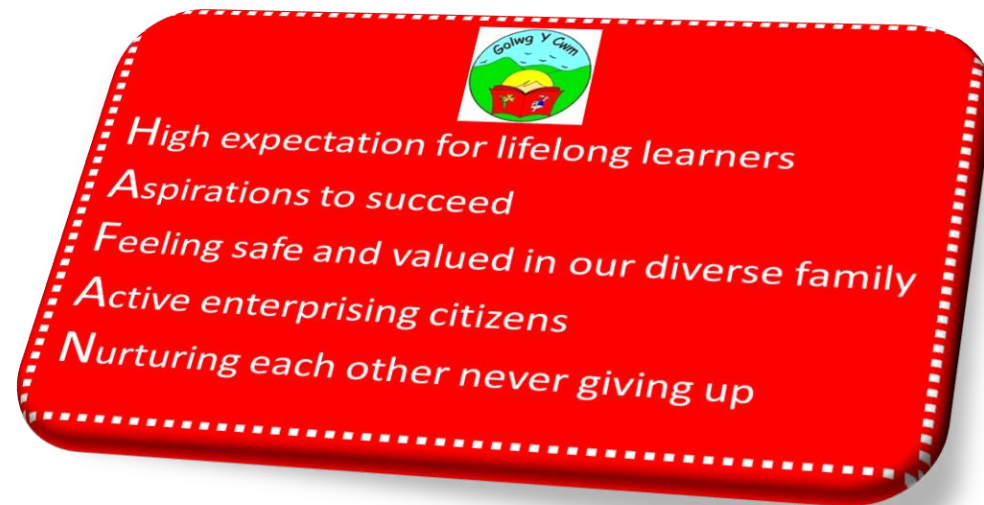
**H**igh expectation for lifelong learners | disgwyliadau uchel ar gyfer dysgwyr gydol oes

**A**spirations to succeed | dyheadau i lwyddo

**F**eeling safe and valued in our diverse family | teimlo'n ddiogel ac yn cael ei werthfawrogi yn ein teulu amrywiol

**A**ctive enterprising citizens | dinasyddion mentrus gweithgar

**N**urturing each other never giving up | meithrin eich gilydd peidiwch byth â rhoi'r gorau iddi



**CRYFACH** *tecach* **GWYRDDACH**  **STRONGER** *fairer* **GREENER**



  
**Powys**

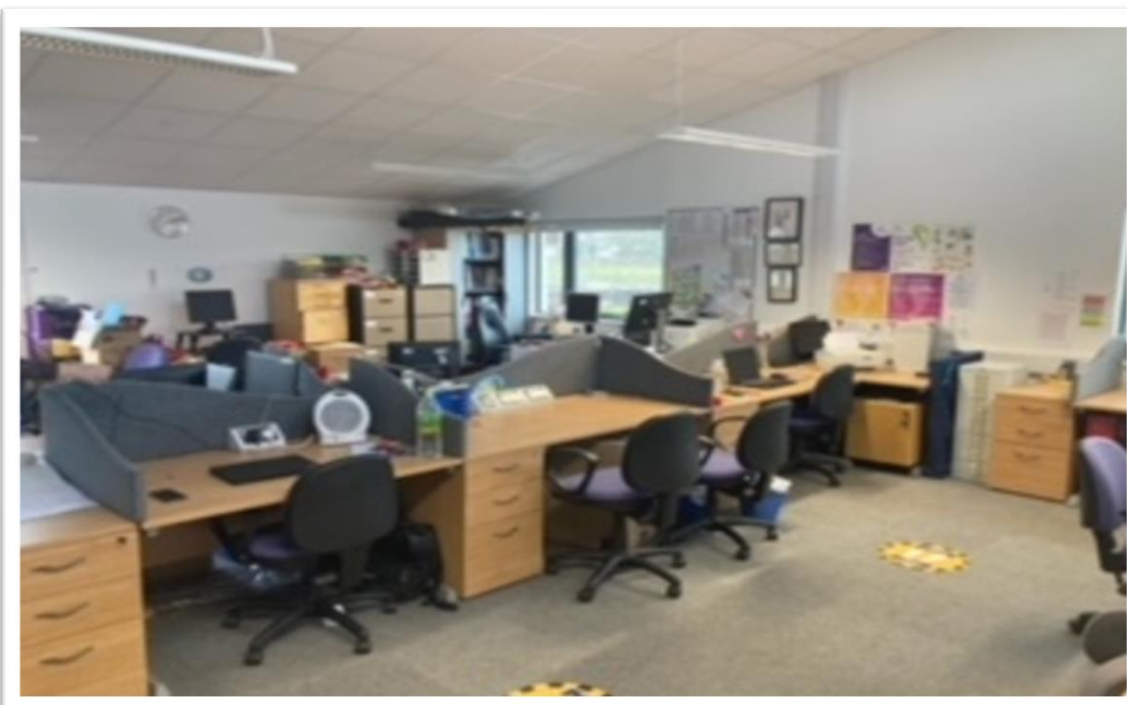
# Ariannu | Funding

- Yn 2015, ariannwyd rôl Rheolwyr Cymunedol gan raglen Cymunedau yn Gyntaf Llywodraeth Cymru 21 awr yr wythnos
- Dechrau Deg Powys Dechrau Deg Powys 2015 yn 21 awr yr wythnos
- Ysgol Golwg Y Cwm wedi ariannu 10 awr yr wythnos ychwanegol
- Ar hyn o bryd mae swyddog cyswllt teulu a rheolwr am 35 awr pob wythnos a cymunedol Dechrau'n Deg
- In 2015 Community Mangers role funded by Welsh Government Communities First program 21 hours per week
- Flying Start Powys funded for Flying Start families 21 hours per week
- Ysgol Golwg Y Cwm funded additional 10 hours per week from PDG funding
- At present there is a Family Liaison Officer 35 hours per week and a flying start Community manager who oversees South Powys from Welsh Government funding



### Gwasanaethau a gyd-leolir yn y swyddfa yn y gymuned

- Ymwelwyr Iechyd Dechrau Deg
- Gweithiwr Cymorth Cam-drin Domestig Calan
- Rheolwr Cymunedol Dechrau Deg De Powys
- Swyddog Ysgolion Bro
- Swyddog presenoldeb
- Gofal plant Dechrau'n deg



### Co-located services

- Flying start health visitors
- Calan Domestic Abuse support worker
- Flying start community manager for South Powys
- Community Focussed Schools Officer
- Attendance officer
- Flying Start childcare

# Yr hyn yr ydym yn ceisio ei gyflawni a sut y Gwnaethom ddechrau ein rhaglen ymgysylltu â theuluoedd

## What we are trying achieve and how we began our family engagement programme

### Canlyniadau'r Rhaglen I sichrhau cyllid

- Rhieni'n teimlo'n hyderus ynghylch cefnogi eu plant.
- Rhieni o'r farn fod eu plant yn ymdopi'n well yn yr ysgol.
- Rhieni'n cymryd mwy o ddiddordeb yn yr ysgol.

### Ymgynghoriad teuluol I bennu anghenion ponodol

- Ymgynghoriad cymunedol – Teuluoedd, disgyblion, trigolion y gymuned, busnesau lleol a phartneriaid potensial
- Wedi dechrau gyda bore coffi wythnosol anffurfiol am ddim, raffl a gweithgaredd gwahanol bob wythnos

### Programme outcomes developed to secure funding

- Parents feel confident about supporting their children.
- Parents feel that their children are coping better at school.
- Parents are more actively engaged at school.

### Family Consultation to determine specific needs

- Community consultation – Families, pupils, community residents, local business and potential partners
- Started with an free informal weekly coffee morning, raffle and different activity every week

## Heriau

- Mae'n cymryd amser i feithrin cysylltiadau arwyddocaol a ffydd gyda theuluoedd
- Gofyn am anghenion teulu heb wybod beth sydd ar gael
- Cyllid ar gyfer gweithgareddau
- Teuluoedd yn gyndyn i gymryd rhan mewn gweithgareddau

## Budd-daliadau

- Mae'r teulu'n derbyn cymorth pwrpasol a seilir ar angen a nodwyd ganddynt
- Cyfleoedd newydd ar gyfer teuluoedd
- Mae teuluoedd yn cael mynediad ar unwaith at wasanaethau brys a chymorth pan fo angen
- Mae pob gwasanaeth yn ymgysylltu ar unwaith a gallant ddarparu ymagwedd gyfannol
- Mae anghenion plant yn cael eu ddiwallu'n gyflymach gan ganiatáu iddynt gael mynediad i addysg a chyflawni eu potensial
- Rydym i gyd yn cefnogi'r un teuluoedd mewn dull cyfannol

## Challenges

- Takes time to build meaningful trusted relationships with families
- Asking what a family needs without knowing what's available
- Funding for activities
- Families reluctant to take part in activities

## Benefits

- Family receives targeted support based on the need they have identified
- New opportunities for Families to Access
- Families have instant access to services and crisis support at the point of need
- All services have immediate engagement and are able to provide a holistic approach
- Children needs are being met for quicker allowing them to access education and meet their potential
- We are all supporting the same families in a holistic approach

Family Support  
available at  
Ysgol Golwg Y  
Cwm

We have a range of  
support services  
available for our  
families including :-

- **Foodbank**

We have a food-  
bank based at the  
school and we can  
refer to other  
organisations in the  
area

- **Energy vouchers**

Prepaid electricity  
vouchers

- **Food Vouchers**

Fresh meat scheme

- **Uniform exchange  
scheme**

We have a selection of  
recycled uniform and  
have vouchers to pre-  
scribe for pethau plant

- **Baby & Clothes  
bank**

Baby & Adult clothes  
available free of charge

- **Hair Cuts**

Vouchers available for  
free hairdresser cut

And barbers

Team around the family



- **Big Book  
Library**

Books and story  
sacks available for  
families to use at  
home

- **Savings club**

Weekly Brecon Cred-  
it  
union savings club

- **Team around the  
family**

Support for families

CRYFACH *tecach* GWYRDDACH  STRONGER *fairer* GREENER



Powys

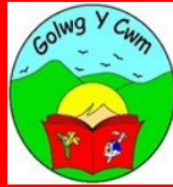


We can also help with

- Applying for Free School Meals
  - Register for a school place
  - Questions regarding childcare
- And lots more

We work in partnership with other community organisations

Please speak to Adele in the Community office



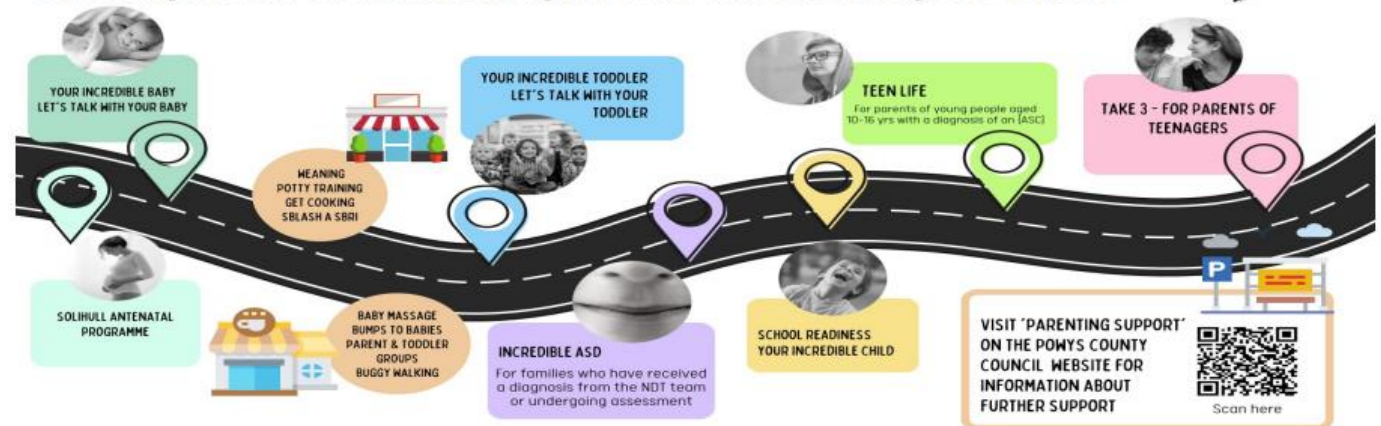
## Family Support Available at Ysgol Golwg Y Cwm

We have different support services available for families, free of charge based at Ysgol Golwg Y Cwm, if you would like to find out more please speak to Adele or any member of staff



# Join us on your journey...

Parenting support for families living in Powys with children aged 0-18 years



Contact Powys Family Information Service for information on other services to support you and your family.

01597 826000 | WWW.POWYS.GOV.UK



CRYFACH *tecach* GWYRDDACH  STRONGER *fairer* GREENER

  
Powys

## FACT – Teuluoedd a'r Gymuned Ynghyd

Mae'r holl weithgareddau am ddim ac yn digwydd yn Ystafell Gymunedol Ysgol Golwg y Cwm

### Maent wedi cynnwys:

- Sgiliau Rhifedd a Llythrennedd Sylfaenol NPTCC
- Rhianta Digidol
- Solihull mewn partneriaeth gydag Ymwelydd Iechyd Dechrau Deg
- Bore Coffi Wythnosol y Rheolwr cymunedol
- Coginio
- Tyfu Coeden Arian – gweithdy Cyllid
- Sesiynau darllen a dweud straeon – Big Book Club!
- Rheoli arian – Gwasanaeth Cyngor Ariannol +
- Cymorth chwilio am swydd
- Llunio CV
- Solihull a tylino babi
- Sgiliau cyfweiliad
- Taleb y Banc Bwyd
- Banc Gwisg ysgol
- Gwnïo,



## FACT – Families and Community Together

All activities are free of charge and take place in the Ysgol Golwg y Cwm Community Room

### These have included:

- Basic Numeracy and Literacy skills NPTCC
- Digital Parenting
- Weekly Coffee mornings
- Cooking
- Grow your own Money tree – Finance workshop
- Reading and storytelling sessions – Big Book Club!
- Money management – Money advice service +
- Job search support
- CV writing
- Solihull & Baby massage
- Interview skills
- Food bank voucher
- Uniform bank
- First Aid
- Sewing



## Cefnogaeth ar Waith | Support in Action

### Pryder:

A – yn ddisgybl oed Derbyn yn yr ysgol. Dioddefodd brofedigaeth drawmatig. Canfu A fod ei fam wedi marw yng nghartref y teulu, ac mae'n byw gyda'i dad a'i llysfam ar hyn o bryd.

Mae A wedi cael magwraeth hapus gyda mam a thad gartref. Mae Dad wedi cael trafferthion gydag alcohol. Mam yw'r prif roddwr gofal ac enillydd yn y cartref. Mae A bob amser wedi adnabod cyflwr meddygol ei fam ac wedi byw gydag ef, a bu adegau pan oedd ei fam wedi bod yn sâl ac wedi cael ffitiau o'i blaen.

Cyn i'w fam farw, roedd A yn fachgen bach tawel a llonydd iawn a oedd yn cael trafferth gyda'i leferydd a'i iaith ac â'i ymddygiad.

Ers marwolaeth ei fam, mae A wedi wynebu heriau sylweddol gyda'i les emosiynol a'i ddieter ac mae hyn wedi cael effaith sylweddol ar ei allu i gael mynediad at ddysgu ac ymdopi â'r ysgol.

### Concern:

A – is a Reception age pupil at the school. He suffered a traumatic bereavement. A found his mum deceased in the family home, he is currently living with his father and step mother.

A has had a happy upbringing with both mum and dad at home. Dad has had struggles with alcohol. Mum has been the main care giver and earner within the household. A has always known and lived with his mum's medical condition and there have been times when his mum has been unwell and has had fits in front of him.

Prior to his mum's passing, A was a very quiet and reserved little boy who struggled with his speech and language and with behaviour.

Since his mum's passing, A has had a significant challenges with his emotional wellbeing, anger and this has had a significant impact on his ability to access learning and cope with school.

## Atgyfeiriadau | Referrals

Iechyd | Health  
Nyrs Ysgol | School nurse ✓  
Ymwelydd Iechyd | Health Visitor  
Therepey galwedigaethol | OT  
Physio | Physio  
Therepi Chware | Play therapy ✓  
Lleferydd ac iaith | Speech and Language team ✓  
Tim o amgylchu y Teulu | Team around the family ✓  
Credud | Young carers ✓  
Plismona Cymunedol | Community Policing  
Tim Blynyddoedd Cynnar | Early Years Team ✓  
Adran Gwaith a Phensiynau | Dept Work & Pensions  
Banc Bwyd | CATCH foodbank ✓  
Darpariaeth gwyliau | Holiday provision ✓  
PCC Tai housing ✓  
Undeb Credyd Aberhonddu | Brecon Credit Union ✓

## Ymriad Ysgol | School Intervention

Blynyddoedd anhygoel | Incredible Year ✓  
Dechrau'n Deg | Flying start ✓  
Siaradwr | Speakr ✓  
Cyngor seicoleg | Psychology advice ✓  
Cwtch ✓  
Grŵp Meithrin | Nurture group  
(Darpariaeth brecwast, cinio ac egwyl |  
breakfast lunch and break provision) ✓  
RHANNU | SHARE ✓  
Ysgol Gwybodus Trawma | Trauma Informed School –  
Motional ✓  
Parseli bwyd brys | Emergency food parcel ✓

## Darpariaeth wedi'i Thargeddu | Targeted Provision

CATCH ✓  
FACT ✓  
Undeb Credyd | Credit Union ✓  
Adran Gwaith a Phensiynau | Department of Work & Pensions  
✓  
(Cymorth budd-daliadau. Cyflogaeth llawn / rhan amser |  
Benefit support. Full / part-time employment)  
Breuddwydion Cymunedol Community Dreams ✓

- Tocyn siop sglodion | Chip shop vouchers
- Tocyn torri gwallt | Haircut vouchers
- Tocyn trydan | Electricity Vouchers
- Tocyn gwisg | Uniform vouchers
- Tocyn cigydd a llysiau | Meat and Veg Vouchers

Grwp coleg | NPTC College  
Neuadd Les Ystradgynlais Miners Welfare Hall ✓  
Ymyrraeth Iechyd Health Interventions  
Grwp gofalwyr ifanc Young carers support  
Grwpiau cymunedol Community Groups

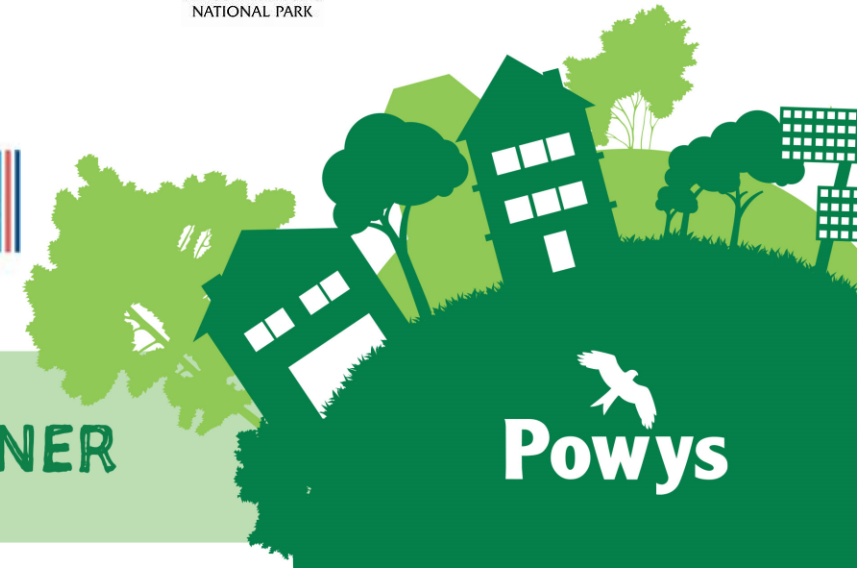
- Pel-droed | Football
- Rygbi | Rugby ✓
- Dawns Solar | Solar dance
- Brownis | Brownies
- Corau | Choirs
- Blodau Ystradgynlais



# Partneriaid | Partners



CRYFACH tecach GWYRDDACH  STRONGER fairer GREENER



  
Powys

## Partneriaid | Partners

Llwyddwyd i sicrhau cyfanswm arian  
ychwanegol o **£307,935.07**

+

Yn ogystal â **£250,000.00** ychwanegol  
ar gyfer cae pêl-droed 3G newydd yn  
Ystradgynlais

=

Cyfanswm y Cyllid ychwanegol a  
sicrhawyd  
**£557,935.07**

Total additional funding secured for items  
to support families **£307,935.07**

+

Plus, an extra **£250,000** for a new 3G  
football pitch in Ystradgynlais

=

Total additional funding secured is  
**£557,935.07**



Saesneg a Mathemateg Sylfaenol bob wythnos ar gyfer oedolion |  
Weekly Basic English and Maths for adults



Ymholiadau am Dai, Gofal Plant, Gwneud cais am Brydau Ysgol am Ddim, lle mewn ysgol, parod i'r ysgol |  
Queries, Housing, Childcare, Apply for FSM school place, school readiness



Wedi gwneud cais i'w Cronfa Gymunedol – gwnaethpwyd cais am £5,000; rhoddwyd £10,000 inni |  
Applied to their Community Fund Applied for £5,000 they gave us £10,000. Funded new community learning area



Cyfleoedd ar gyfer y Celfyddydau ac Ymgysylltu â'r Teulu; agwedd Bartneriaeth tuag at gyllid |  
Arts and Family Engagement Opportunities Partnership approach to funding

CRYFACH *tecach* GWYRDDACH  STRONGER *fairer* GREENER



# Cymorth i'r Teulu | Family Support

## Family Support Available Ysgol Golwg Y Cwm



We have different support services available for families, free of charge based at Ysgol Golwg Y Cwm, if you would like to find out more please speak Adele in the community office or to a member of staff

**Uniform scheme**

**Food bank**

**Energy & Food vouchers**

**Big book library**

**Clothes bank**

**Baby clothes**

**Savings club**

**Hair cuts**



**CRYFACH** *tecach* **GWYRDDACH**  **STRONGER** *fairer* **GREENER**

  
**Powys**



# Esiamp! o Weithgareddau i'r Teulu | Example of Family activities

**GYC Savings club**

I am a Golwg Y Cwm super saver

"Its awesome having my own money" -Year 2 pupil

Savings club keeps my money safe -Year 5 pupil

Being part of savings club helps me to learn about coins - Year 4 pupil

Over 148 members and rising  
We have the most successful school savings club in Powys

Over 66 weeks we have saved **£17446.85**

Being part of savings club helps me to learn about coins - Year 4 pupil



**Make and Take Cafe**

Community Room at Ysgol Golwg Y Cwm

Would you like to learn a new skill with your child?

We are going to be running some **FREE** family "make and take" sewing sessions

You and your child will be able to choose to make a book bag, bunting or story cushion

All you need to do is turn up!

**Bunting, book bag or story cushion 21st July 9am till 12pm**

Refreshments will be provided, Spaces are limited to book your space please at reception of Ysgol Golwg Y Cwm

**FACT**

**ENGLISH AND MATHS**

Improve your skills • Small groups  
Gain qualifications • Free tuition

For further information about Maths and English classes, please contact:  
Samantha Crookes - Return to Learn sessions  
Ysgol Golwg Y Cwm  
Mondays 10am - 12pm in term time. Free.  
Just call in or for more information call 01686 614454.

**NPTC**

www.nptcgroup.ac.uk  
NPTCGroup

**Dros 9 mlynedd wedi arbed dros £ 91,679.23**

**GYC members have saved over £91,679.23 in 9 years**

**Cymorth effeithiol yn yr ysgol  
ar gyfer disgyblion sydd  
dan anfantais a disgyblion  
sy'n agored i niwed –  
astudiaethau achos  
arfer dda**

Chwefror 2020



[https://www.estyn.llyw.cymru/adroddiadau-thematig/cymorth-effeithiol-yn-yr-ysgol-ar-gyfer-disgyblion-sydd-dan-anfantais-0?\\_ga=2.256975880.2063488343.1679954448-162631398.1672744791](https://www.estyn.llyw.cymru/adroddiadau-thematig/cymorth-effeithiol-yn-yr-ysgol-ar-gyfer-disgyblion-sydd-dan-anfantais-0?_ga=2.256975880.2063488343.1679954448-162631398.1672744791)

**Effective school support  
for disadvantaged and  
vulnerable pupils – case  
studies of good practice**

February 2020



[https://www.estyn.gov.wales/thematic-report/effective-school-support-disadvantaged-and-vulnerable-pupils-case-studies-good?\\_ga=2.55766824.2063488343.1679954448-162631398.1672744791](https://www.estyn.gov.wales/thematic-report/effective-school-support-disadvantaged-and-vulnerable-pupils-case-studies-good?_ga=2.55766824.2063488343.1679954448-162631398.1672744791)

## Astudiaeth achos 26: Cefnogi dysgu disgyblion yn y cartref

Mae Ysgol Golwg y Cwm yn ysgol gynradd cyfrwng Saesneg ym Mhowys.

Mae llawer o deuluoedd yr ysgol yn dioddef effeithiau negyddol anfantais ac mae'r ysgol yn ymwybodol iawn bod angen iddi weithio ochr yn ochr â rhieni, gofalwyr, teuluoedd a rhwydweithiau ehangach er mwyn cael effaith ar gynnydd cymdeithasol, emosiynol ac academaidd disgyblion. Felly, mae'n buddsoddi'n sylweddol i feithrin y perthnasoedd hyn a chefnogi teuluoedd er mwyn gallu pontio'r bylchau a hyrwyddo cyfleoedd disgyblion i'r eithaf i ddilyn pob agwedd ar eu haddysg. Mae arweinwyr yn gwybod ei bod yn hanfodol bod yr ysgol yn darparu pecyn cymorth a phrofiadau pwrpasol sy'n diwallu anghenion penodol teuluoedd.

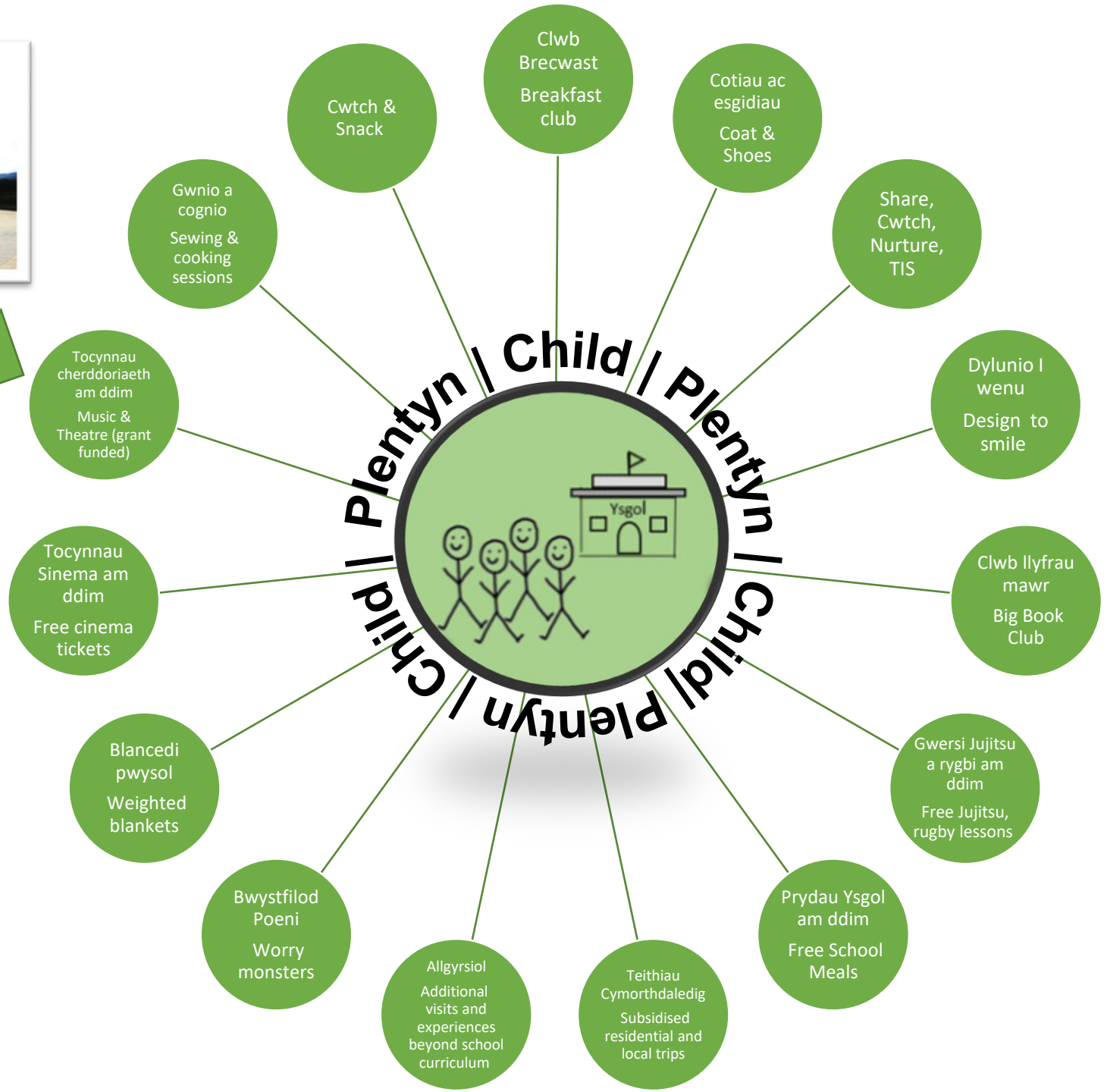
“Most pupils feel that the school has enabled them to be aspirational”

“Mae'r rhan fwyaf o ddisgyblion yn teimlo bod yr ysgol wedi'u galluogi i fod yn uchelgeisiol”

## Case study 26: Supporting pupils' learning at home

Ysgol Golwg Y Cwm is an English-medium primary school in Powys.

Many of the school's families experience the negative effects of disadvantage and the school very much recognise that in order to have an impact on the social, emotional and academic progress of pupils, they need to work alongside parents, carers, families and wider networks. Therefore, they invest significantly in building these relationships and supporting families to be able to bridge the gaps and maximise the pupils' opportunities to access all aspects of their education. Leaders know that it is essential that the school provides a bespoke package of support and experiences which meet the specific needs of families.





**Diolch**

**Unrhyw gwestiynau?**

**Thankyou**

**Any questions?**

**CRYFACH** *tecach* **GWYRDDACH**  **STRONGER** *fairer* **GREENER**



**Powys**

## Astudiaeth Achos 1

Rydym wedi bod yn dod draw i weithgareddau teulu'r ysgol am y 2 flynedd ddiwethaf, rydym wedi cymryd rhan mewn llawer o weithgareddau a bob amser wedi gwneud i deimlo'n rhan o gymuned yr ysgol. Fel teulu rydym i gyd yn cymryd rhan er enghraifft sesiynau meithrin teulu, pobi, digwyddiadau adrodd straeon, boreau coffi a llawer mwy. Mae ein plant yn cymryd rhan mewn clwb cynilo, clwb llyfrau mawr ac unrhyw beth arall. Rydym hefyd wedi derbyn llawer o gefnogaeth gan yr ysgol gan gynnwys cyngor lles, cyfeiriadau banc bwyd, cyrsiau magu plant a llawer mwy.

Mae'r boreau coffi wedi bod yn achubiaeth i ni, mae beth bynnag sydd angen cymorth gyda'r ysgol yno i ni bob amser. Teimlwn yn rhan o'r ysgol gan ein bod yn gwirfoddoli i'r ysgol hefyd.

## Case Study 1

We have been coming along to the school family activities for the last 2 years, we have taken part in lots of activities and always made to feel part of the school community. As a family we all take part for example Nurture family sessions, baking, storytelling events, coffee mornings and lots more. Our children take part in savings club, big book club and anything else. We have also received a lot of support from the school including welfare advice, food bank referrals, parenting courses and lots more.

The coffee mornings have been a life line to us, whatever we need help with the school is always there for us. We feel part of the school as we volunteer for the school too.

## Astudiaeth Achos 2

Rwy'n mwynhau'r holl bethau rydyn ni'n eu gwneud yn fawr iawn, rydw i wedi dysgu cymaint o bethau newydd ac wedi gwneud ffrindiau gwych. Mae'r ysgol yn gynnes a chyfeillgar ac mae rhywbeth i'w wneud bob amser. Mae fy mhlentyn wedi ymgartrefu'n dda iawn, mae'r athrawes yn dweud ei fod yn gwneud yn dda iawn hefyd ac rwy'n teimlo'n rhan o'r ysgol ac rwyf bellach yn rhan o'r Gymdeithas Rhieni ac Athrawon.

## Case Study 2

I enjoy very much all the things we do, I have learn so many new things and made some wonderful friends. The school is warm and friendly and there is always something to do. My child has settled in really well, the teacher says he is doing very well too and I feel part of the school and I am now part of the PTA.