

# **Early Years Rights in Practice: Research informed Practice**

21<sup>st</sup> May 2025 10 - 3pm

*Hosted by the Children's Rights in Early Years  
Network (CREYN)*



## Children's Rights in Early Years Network

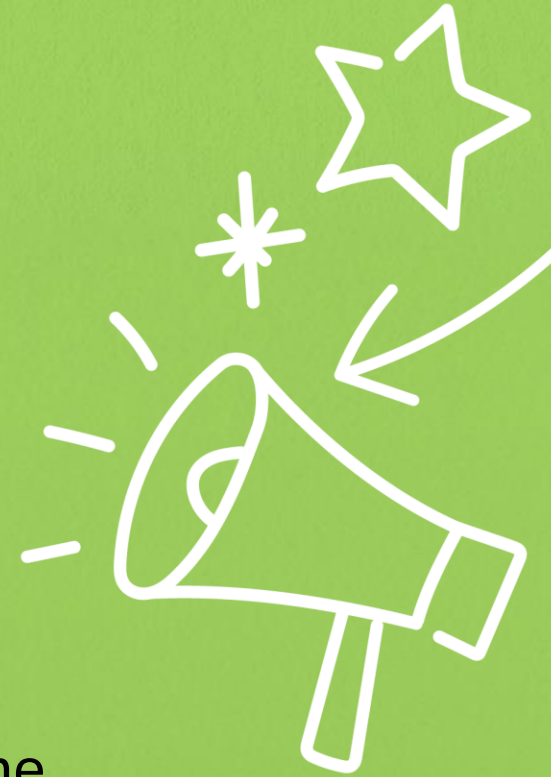
---

- The Children's Rights in Early Years Network is jointly coordinated by: Swansea University and Children in Wales.
- It is a network of academics, practitioners, policy makers and third sector organisations with an interest in young children's rights.
- Its aim is to bridge the gap between research, policy and practice.



# Housekeeping

- Toilets for all at the back of the main event space, as well as on floors one and six.
- Fire Exits clearly marked on all floors. Fire assembly point is at the pollinator gardens outside the main entrance at Spark.
- No fire drills are planned.
- Water fountain located in the kitchen area at the back of the main event space.
- Lunch + tea / coffee will be served at 12.30 but there is an open cafe should anyone need any additional refreshments!
- There is a (very) small wellbeing room also located near the water fountain and the key can be obtained from a member of our staff or the main reception.
- Access to other floors must be with a member of Children in Wales staff.



PLANT YNG NGHYMURU  
CHILDREN IN WALES

# Agenda

---

**10:40 The importance of the First 1000 Days; using the Pledge for Babies to support this critical period.**

*Dr Liz Gregory*

**10:50 The Rights Start in Early Childhood: Let's get real with young children's rights.**

*Professor Jane Murray*

**11:20 Address from Minister for Children and Social Care. *Dawn Bowden***

**11:30 Workshop 1**

**12:30 LUNCH**

**13:15 Research - informed - practice: What does it mean when working with young children.**

*Professor Jane Williams*

**13:45 Workshop 2**

**14:45 Message from Children's Commissioner. *Rocio Cifuentes***

**14:55 Closing remarks. *Dr Jacky Tyrie and Anna Westall***



# The importance of the First 1000 Days; and using the Pledge for Babies to support this critical period.

Dr Liz Gregory - Parent-Infant Foundation



PLANT YNG NGHYMURU  
CHILDREN IN WALES

"Babies' brains double in size within the first year of life. One million neural connections are formed every second during this time. After the age of two, some of these neural connections are pruned, allowing brain circuits to become more efficient. This process is shaped by early experience, neural connections that are used more often are strengthened and those that are used less are pruned away".

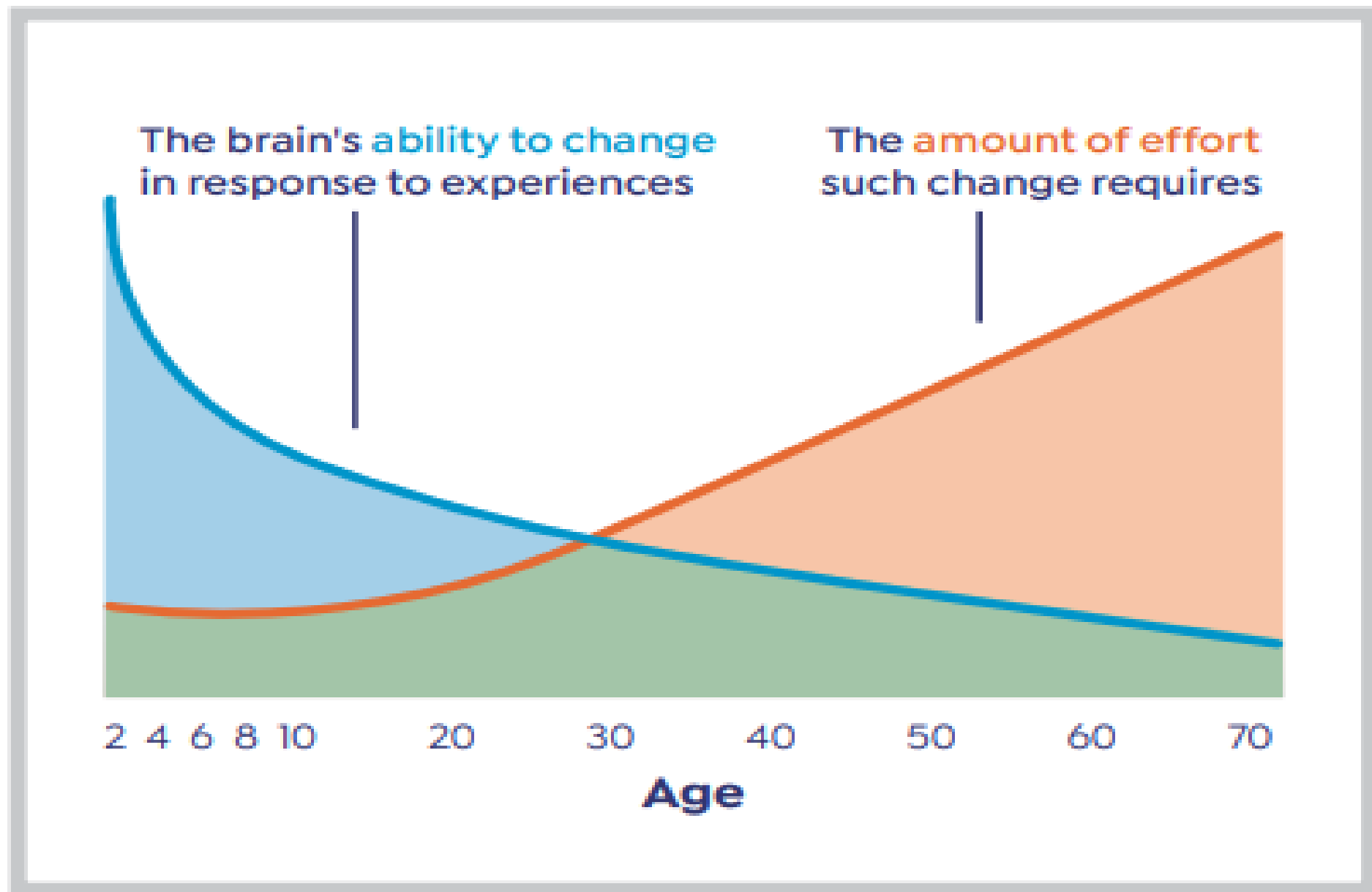


PLANT YNG NGHYMRU  
CHILDREN IN WALES

“The early moments of life offer an unparalleled opportunity to build the brains of the children who will build the future.” UNICEF

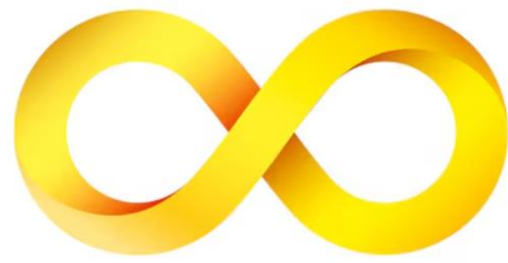


PLANT YNG NGHYNRU  
CHILDREN IN WALES



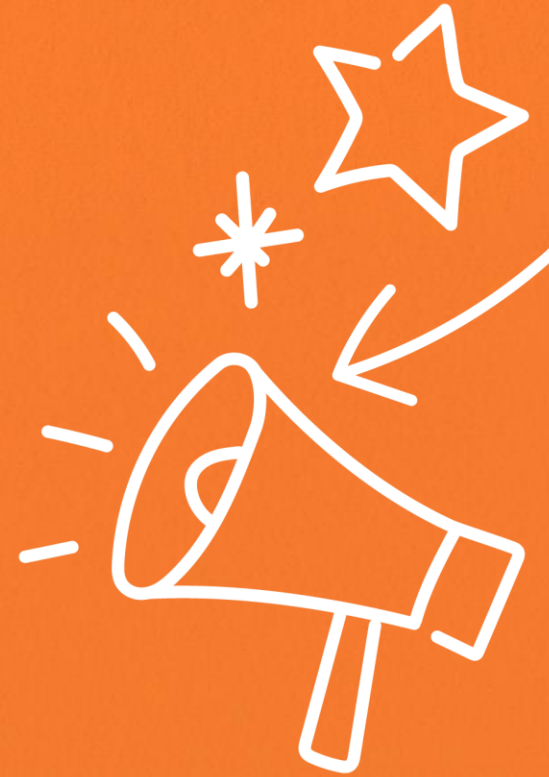
Source: Lewitt (2009). Replicated from  
<https://developingchild.harvard.edu/science/key-concepts/brain-architecture/>





PLANT YNG NGHYMURU  
CHILDREN IN WALES

# The Pledge for Babies in Wales



PLANT YNG NGHYNMRU  
CHILDREN IN WALES



## Finalise Pledge

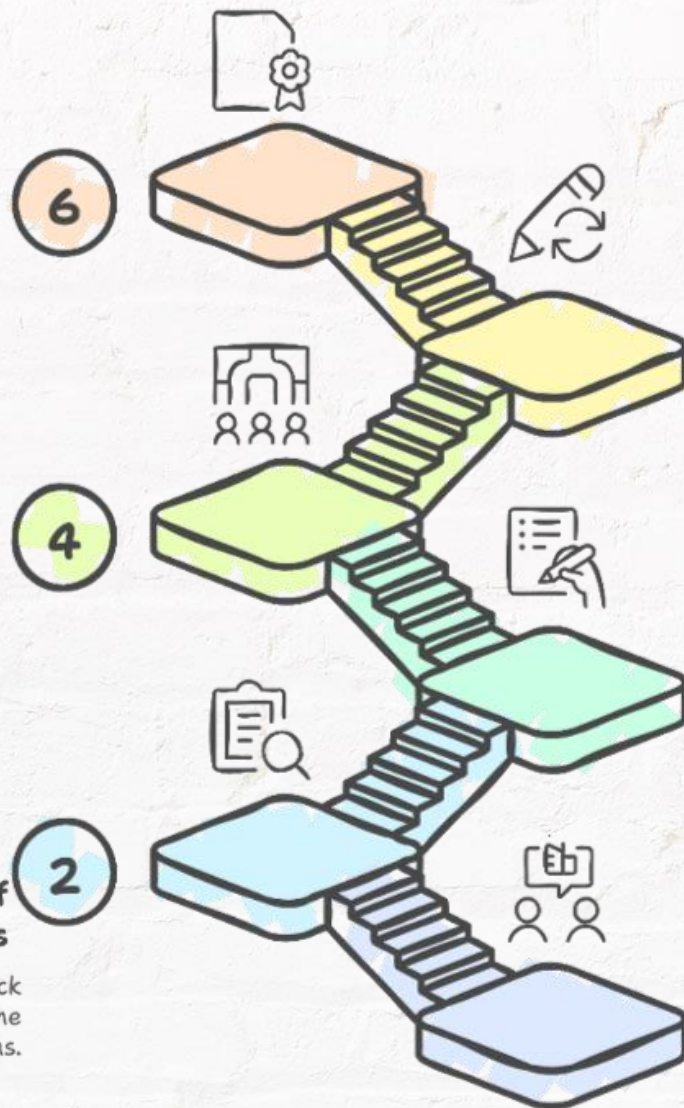
Completed the pledge document with input from the steering group and colleagues.

## Second Consultations

3 focus groups with parents and 3 workshops with professionals to gather feedback on the draft pledge statements.

## Analysis of Responses

Analysed the feedback collected from the initial consultations.



5

## Refine Statements

Refined the draft pledge statements based on the second consultation feedback.

3

## Draft Pledge Statements

Developed draft pledge statements based on initial consultation responses.

1

## Initial Consultations

Gathered insights from a range of professionals and parents in response to three questions considering what babies need, what their grown-ups need, and what they need from wider society.



PLANT YNG NGHYMRU  
CHILDREN IN WALES





PLANT YNG NGHYMRU  
CHILDREN IN WALES



Swansea University  
Prifysgol Abertawe

# Here I am!

## A pledge for babies in Wales

This pledge has been developed to highlight the perspective of the baby, focusing on their rights and needs within the first 1000 days. It is informed by the United Nations Convention on the Rights of the Child (UNCRC) and has been co-produced with parents, their babies and professionals across Wales.

Babies have unique needs and are more vulnerable than others because they can't advocate for their rights, so this pledge ensures their needs are considered.

This pledge acknowledges that all babies and their grown-ups (parents, carers or guardians) are different, and some will need more support than others.

**This pledge is written from the voice of the baby.** It sets out what a baby needs from their grown-ups, what their grown-ups need to support and care for their baby and what babies and their grown-ups need from communities.

**I am my own person, and I depend on you to love me and help me understand this big wide world. This is my voice.**



**We are asking everyone to give a commitment to consider babies unique needs and voice in all decisions that are being made.**



PLANT YNG NGHYMRU  
CHILDREN IN WALES

# **The Rights Start in Early Childhood: Let's get real with young children's rights.**

*Professor Jane Murray*



PLANT YNG NGHYMRU  
CHILDREN IN WALES

# Address from Minister for Children and Social Care

*Dawn Bowden*



PLANT YNG NGHYMRU  
CHILDREN IN WALES



## Workshops (morning)

---

**1.Children's Rights in Practice – *Children's Commissioners Office – Main event space***

**1.The Early Years Wales, Movement Champion campaign – *Early Years Wales – room 6.35***

**3.Right to be heard in early childhood practise in the context of Forest Schools – *Forest School Swansea Neath Port Talbot - room 1.34***

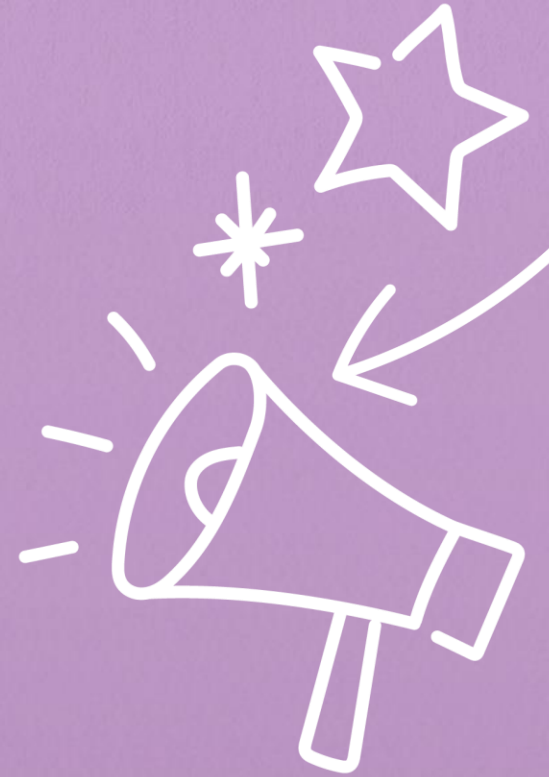


PLANT YNG NGHYMRU  
CHILDREN IN WALES



# Research - informed - practice: What does it mean when working with young children

*Professor Jane Williams*



PLANT YNG NGHYMURU  
CHILDREN IN WALES



## Workshops (afternoon)

---

1. **Children's Rights in Early Years Practice: Making Rights Real in Daily Interaction** – *Ty Plant Community Nursery - Main event space*
2. **How to build a NEST - whole system mental health and wellbeing support for babies and their families** – *Welsh Government - room 1.34*
3. **Giving young children a voice in community programmes** – *Save the Children Cymru – room 6.35*



PLANT YNG NGHYMURU  
CHILDREN IN WALES





# Message from Children's Commissioner

*Rocio Cifuentes*



PLANT YNG NGHYMURU  
CHILDREN IN WALES

# Thank you

[www.menti.com](https://www.menti.com)

2508 1039



PLANT YNG NGHYMURU  
CHILDREN IN WALES