



THE PRICE OF PUPIL POVERTY

What does this mean and what can schools do?

Impact on learners

Poverty can make children and young people feel excluded, stigmatised and bullied.

It impacts on learners' education and life chances, meaning they can miss out on the opportunity to be the best they can.

Key areas to consider

Early identification:

Detailed knowledge of learners' needs

Policy:

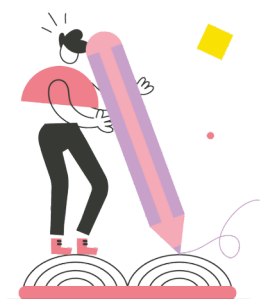
Review policies in line with poverty

Awareness of poverty:

Do staff and learners have an understanding of what poverty really means?

The curriculum:

In what areas does understanding poverty fit?



Some quick solutions

Appoint an equity champion from school staff

Recognise/identify learners from lower income families

Engage with parents/carers

Raise awareness of benefits and grants that they may be entitled to

Develop an action plan

Use existing resources

Appoint an Equity Ambassador from amongst the learners in the school

Take a whole school approach

Provide training for staff to recognise signs of poverty

Increase engagement and commitment from a range of stakeholders at regional, local authority and community levels



The guides can be found on the Welsh Government's Education website: [HWB](http://www.hwb.gov.uk)

For further information please contact: pupilpoverty@childreninwales.org.uk

029 2034 2434 | www.childreninwales.org.uk