



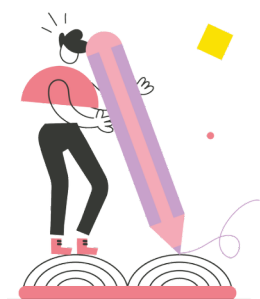
THE PRICE OF PUPIL POVERTY

What does this mean and what can schools do?

Impact on learners

Missing out on the ability to participate fully in school life due to costs (trips; activities; access to equipment; subject choices) results in learners' low self-esteem, confidence and wellbeing.

Key areas to consider



- | | |
|---------------------------------|--|
| Enrichment activities: | What can be done to remove barriers to taking part? |
| Resources and materials: | Do these cause unintentional barriers and stigma? |
| School trips: | Are they realistic in terms of cost and payment methods? |
| Events: | Are they inclusive? |

Some quick solutions

Engage with local companies, enterprises and institutions to bring activities into the school

Ensure costs associated with particular subjects are not a deterrent to pupils

Access/inform parents of small education grants or bursaries to support learners in purchasing specialist equipment for a particular subject

Consider approaches to subsidising costs of school trips without stigmatising

Provide sufficient notice of school trips and allow payments in instalments

Raise awareness of the School Essentials Grant (formerly PDG Access) to those families that are eligible

The guides can be found on the Welsh Government's Education website: [HWB](#)



For further information please contact: pupilpoverty@childreninwales.org.uk

029 2034 2434 | www.childreninwales.org.uk