

Complex Needs and Less Complex Needs

Pilot Projects B & C



The starting point

- WAG completed a wide ranging consultation that looked at the statutory process for SEN (2007)
- As a result WAG initiated 4 pilot projects across 7 local authorities which commenced in 2009

- **Pilot A: Caerphilly and Flintshire**

Quality assurance of ALN Provision

- **Pilot B: Carmarthenshire and Torfaen**

The interdisciplinary model for children and young people with severe and complex needs

- **Pilot C: Pembrokeshire, Bridgend & Torfaen**

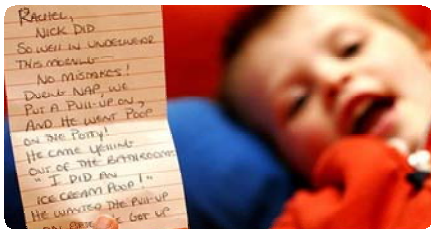
The model for children and young people with less complex ALN

- **Pilot D Cardiff and Newport**

The role of the ALN co-ordinator (ALNCo)

What's different?

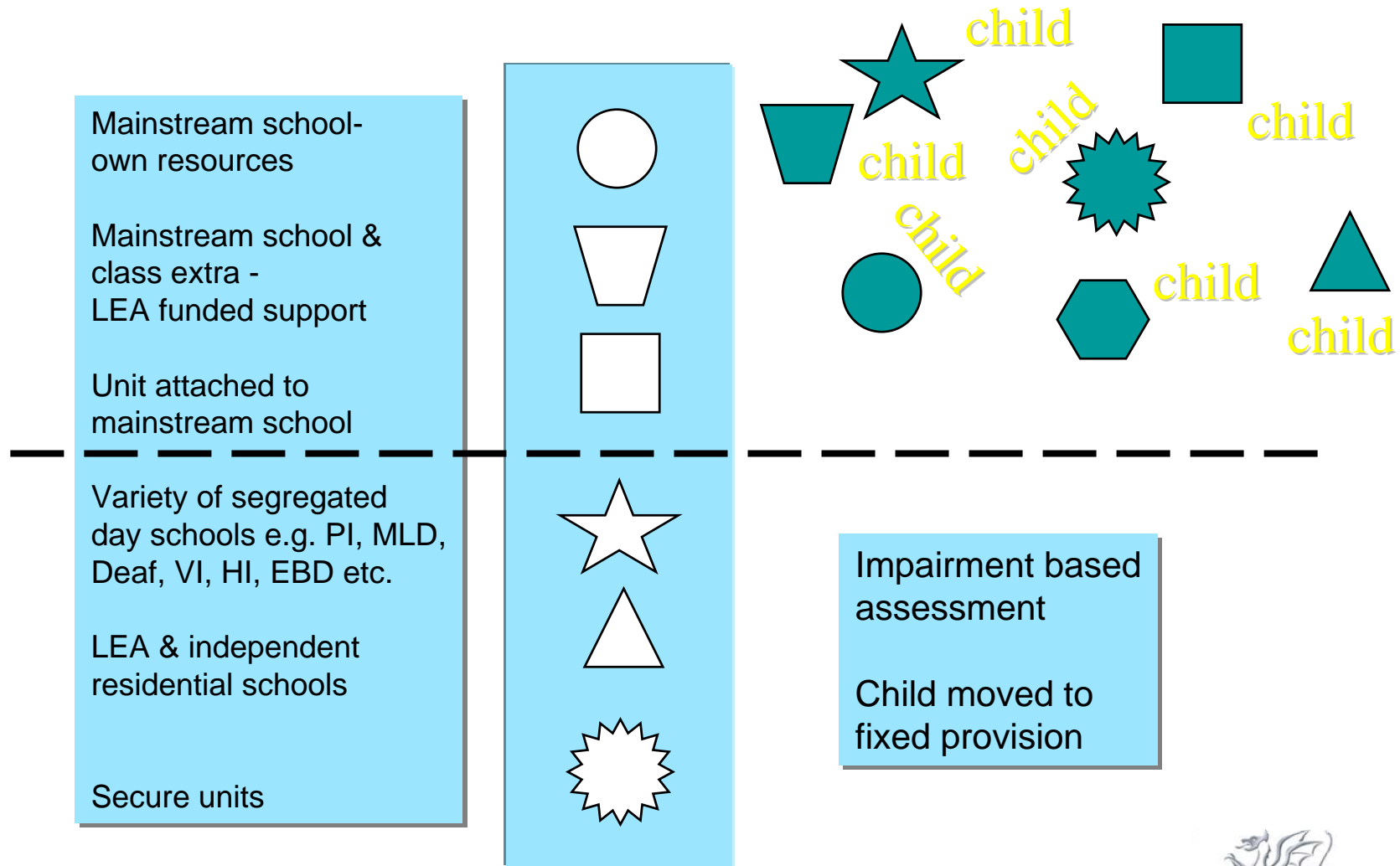
- Flexibility - faster, lower stress, more dynamic based on a multi-agency model
- Functional needs focus / Person Centred Planning (PCP)
- Same process for complex & less complex needs
- Same Individual Development Plan (IDP) for all needs – from school Action – Action Plus – Complex Needs



Llywodraeth Cynulliad Cymru
Welsh Assembly Government



Current Provision – Rigid or Flexible



Functional needs focus

- PCP is not based on diagnostic descriptions.
- Everyone focuses on the child's needs and how best to support those needs from their own informed perspective
- Everyone focuses on the development of long-term skills sets across all settings.



Person Centred Planning (PCP)

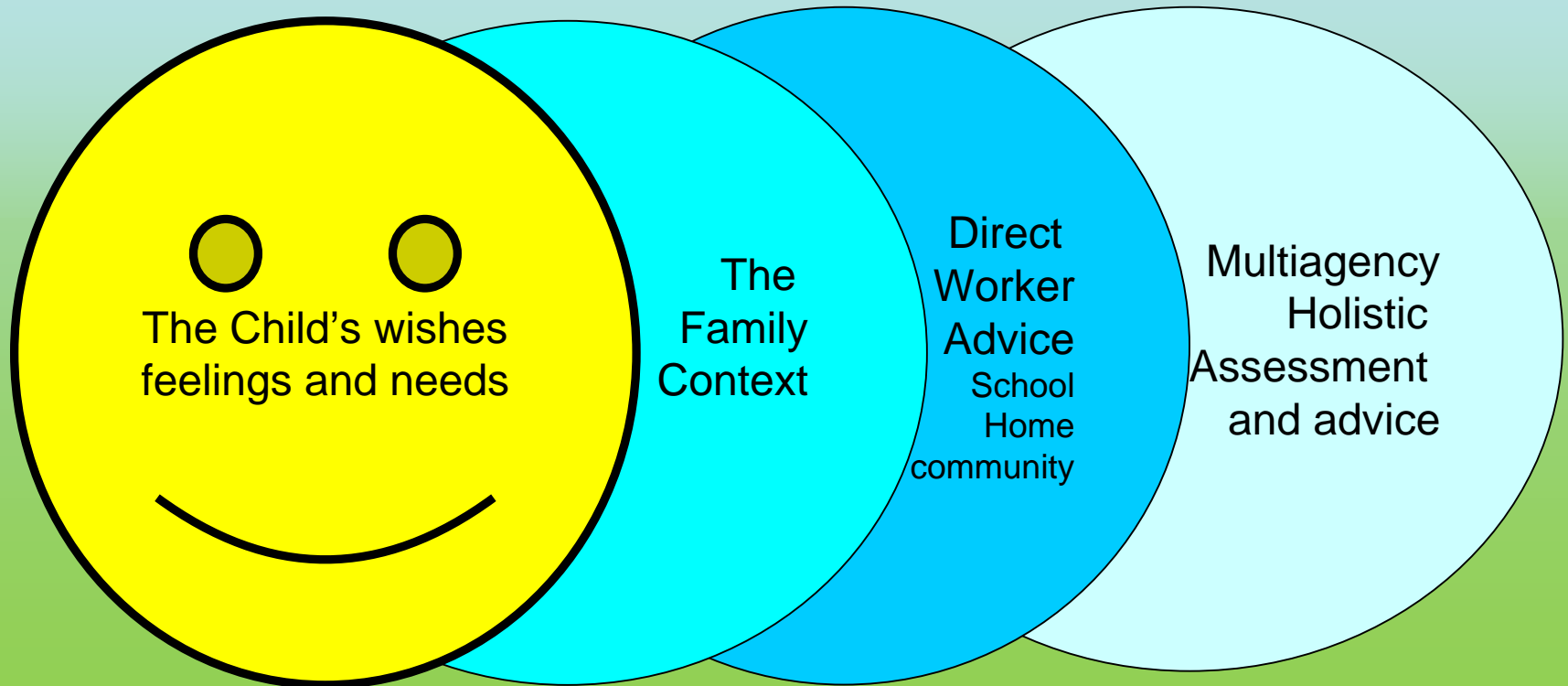
- PCP is the starting point for the assessment process
- The PCP tools identify
 - What's important to ...
 - What's important for...
 - What's working/ not working
- Leads to target setting & action planning
ie: How best to support the child



Llywodraeth Cynulliad Cymru
Welsh Assembly Government



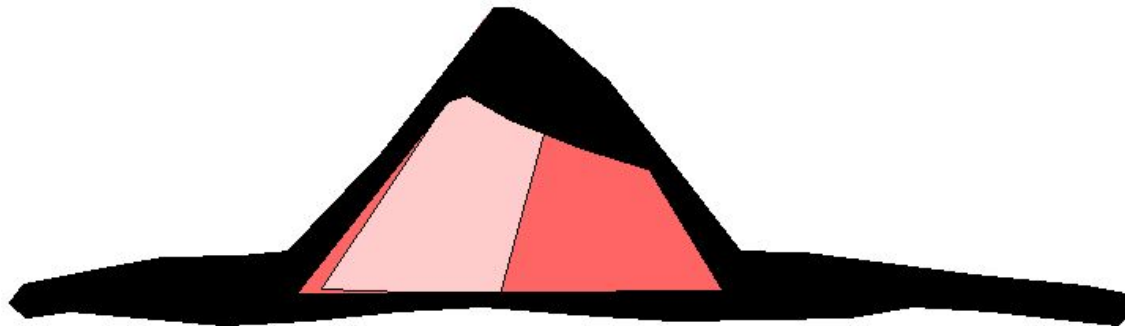
The Model



Llywodraeth Cynulliad Cymru
Welsh Assembly Government

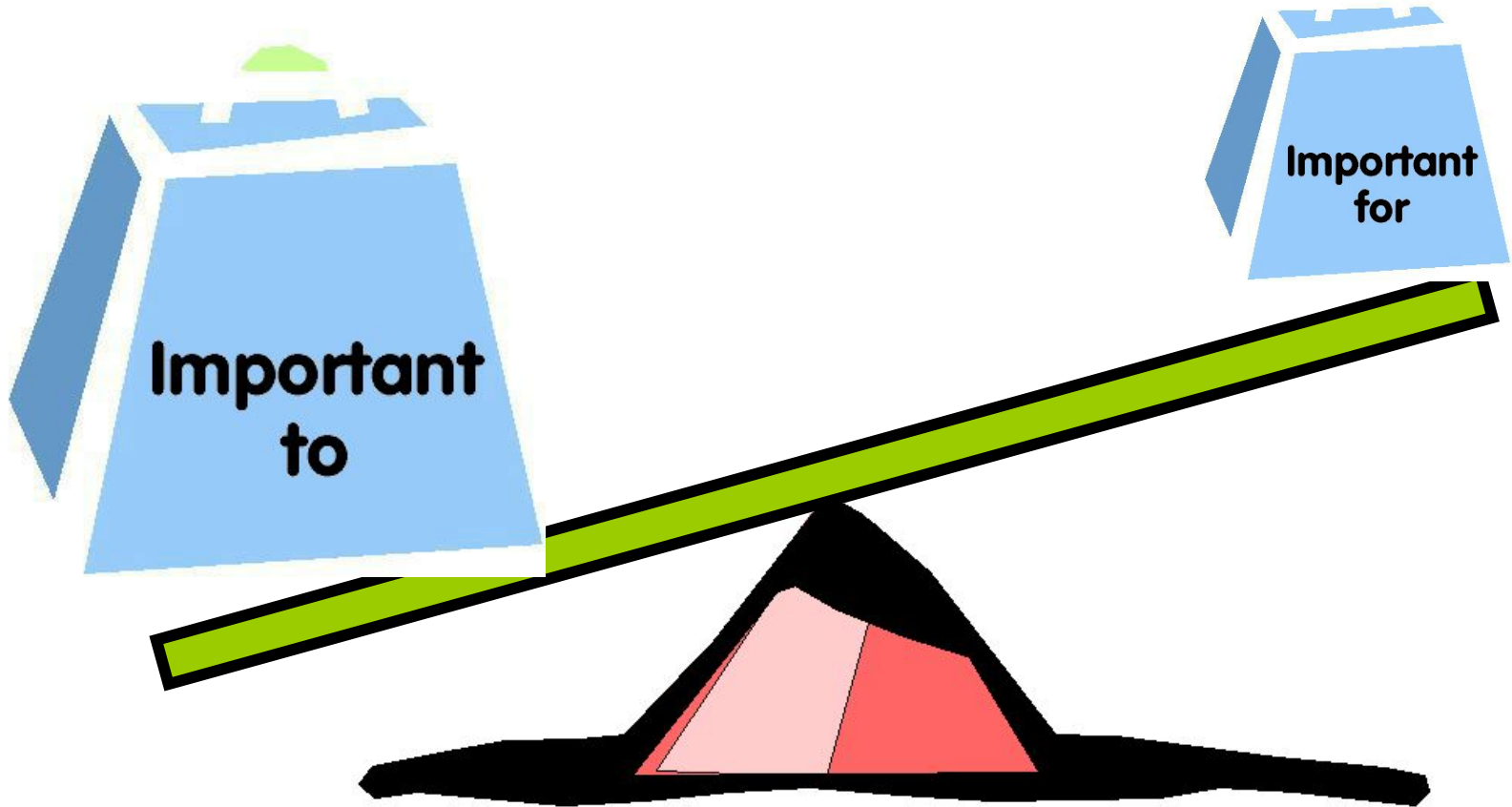


Balance



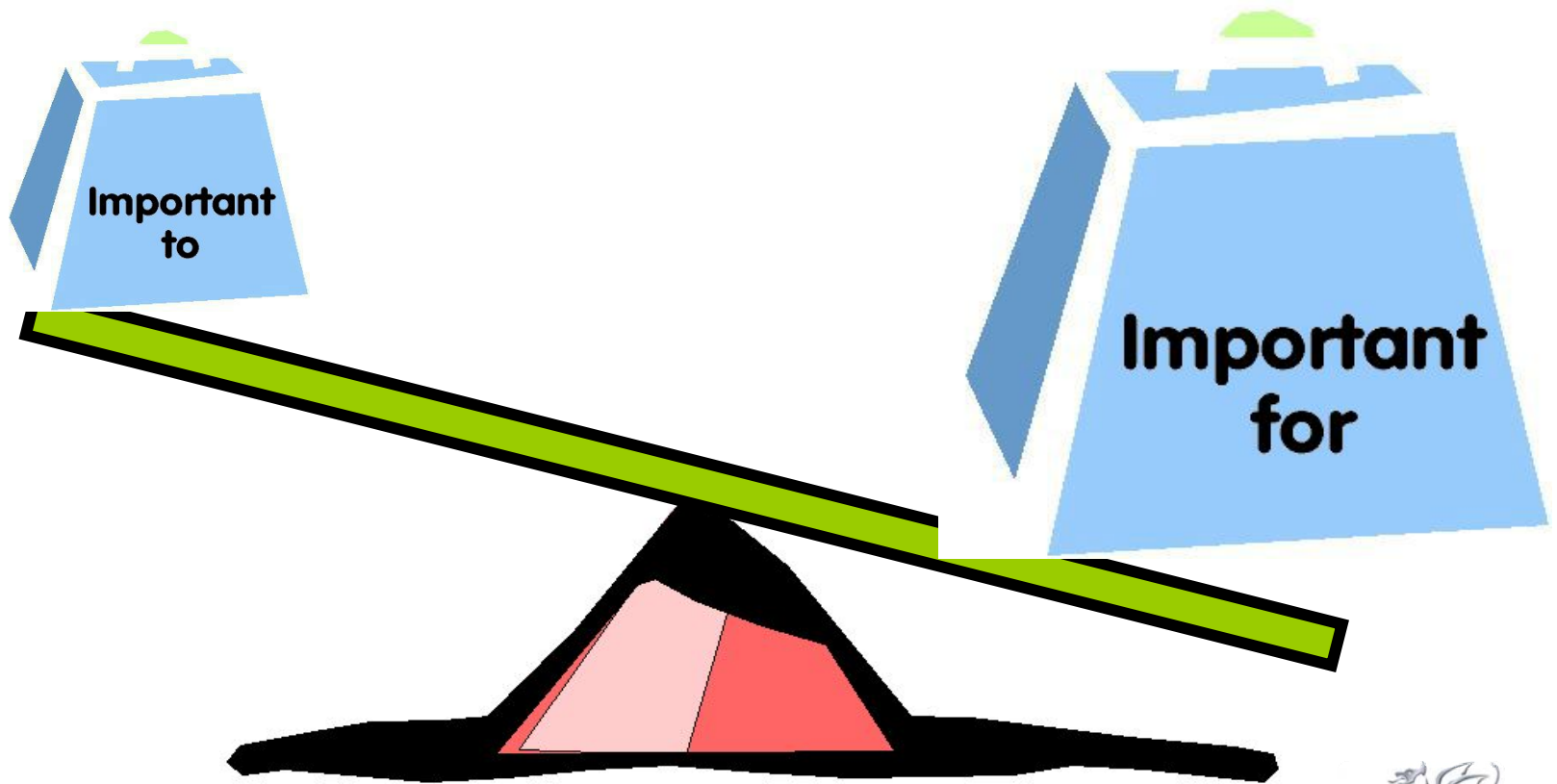
Llywodraeth Cynulliad Cymru
Welsh Assembly Government

All Choice No responsibility



Llywodraeth Cynulliad Cymru
Welsh Assembly Government

Health and Safety Dictates Lifestyle

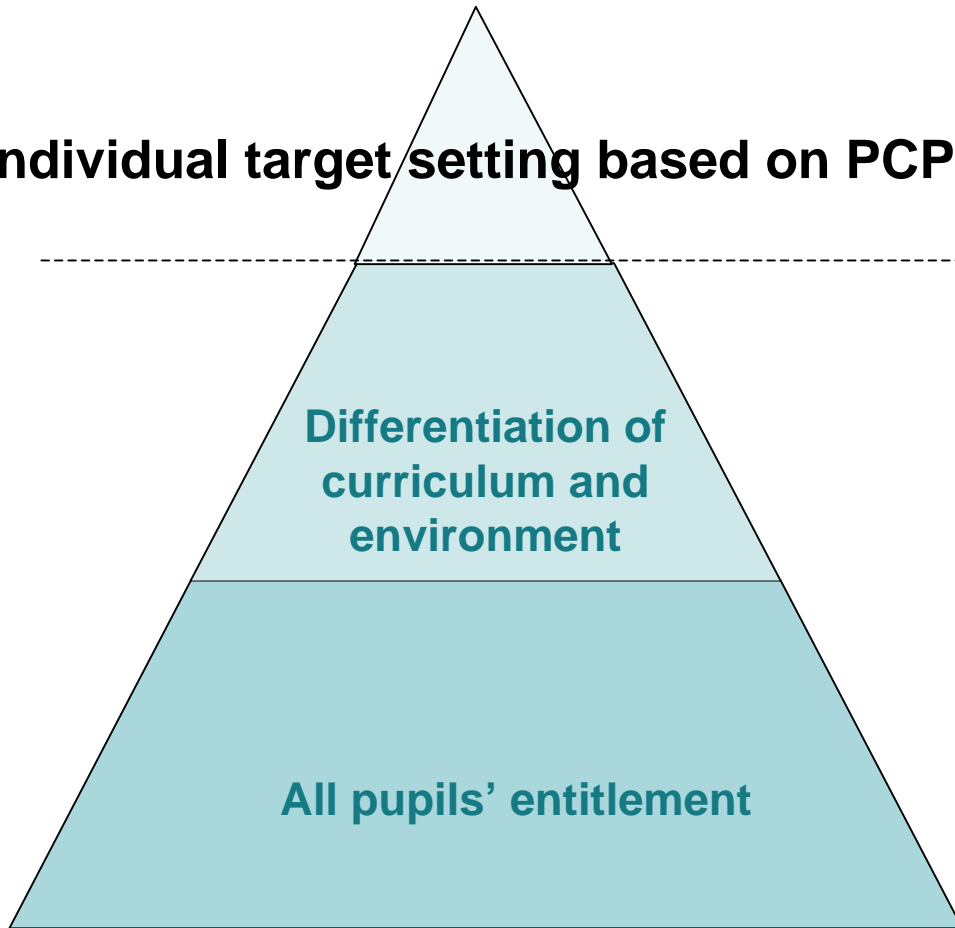


Llywodraeth Cynulliad Cymru
Welsh Assembly Government



Individual Development Plan (IDP)

Individual target setting based on PCP process translates into the IDP



NONE of this is included in the IDP *schools are already capturing these interventions in existing curriculum plans.*



Llywodraeth Cynulliad Cymru
Welsh Assembly Government

What's an IDP?

- Single plan across all agencies covering birth-25 years
- Formative evaluation tool
- Provides rich picture of child/young person's needs and how they are being met - validated through PCP
- Tailored assessment of functional need
- Includes short medium and long term targets
- Clarifies real nature of resource and provision required



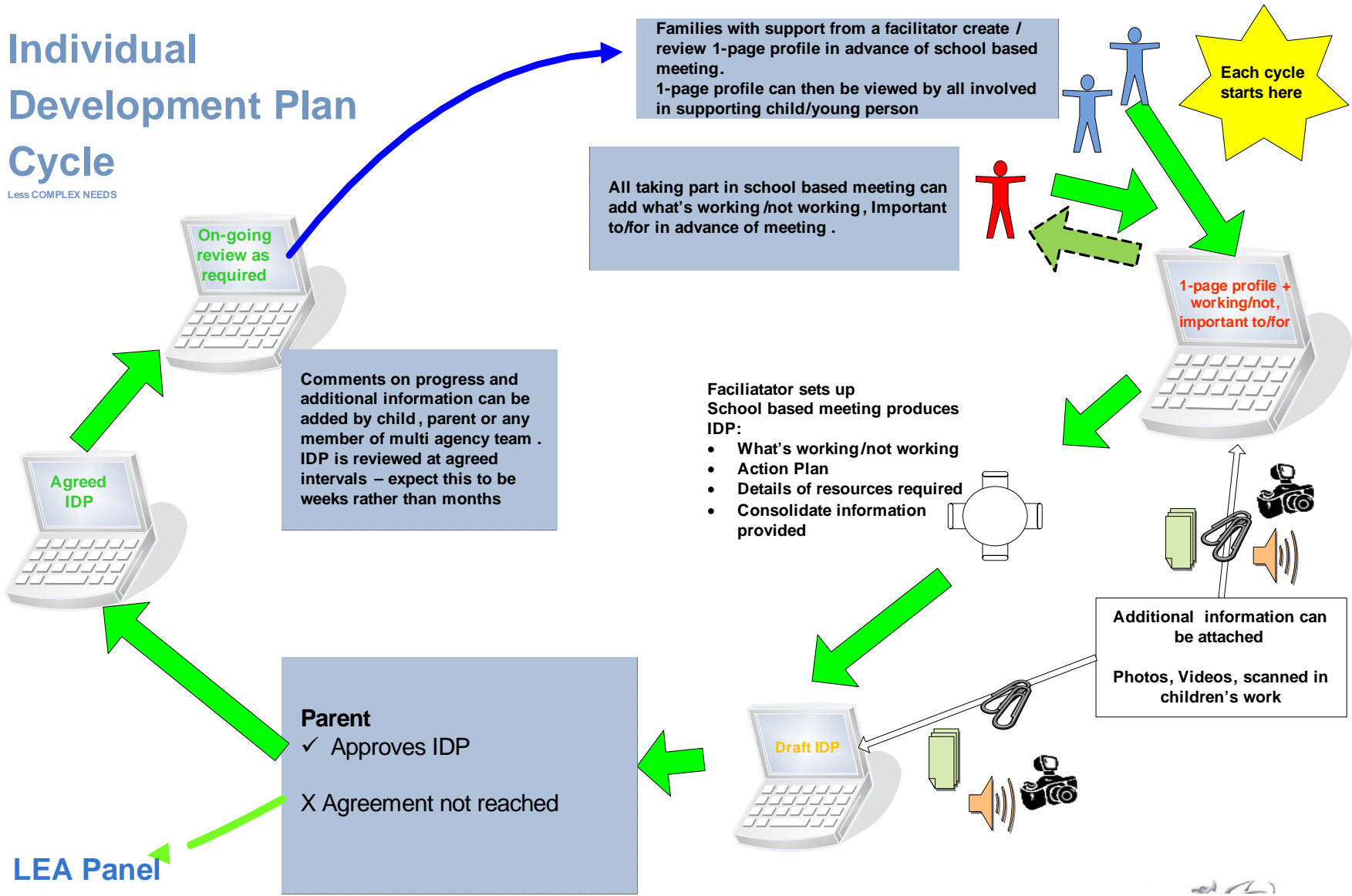
The IDP on-line tool

- Common planning tool - all functional information in one place
- Provides easy access for all involved = flexibility
- Supports real-time communication of relevant changes in child's life
- Includes keys and latches to ensure confidentiality of information
- A web based tool enables the IDP to be a constant work in progress



Individual Development Plan Cycle

Less COMPLEX NEEDS

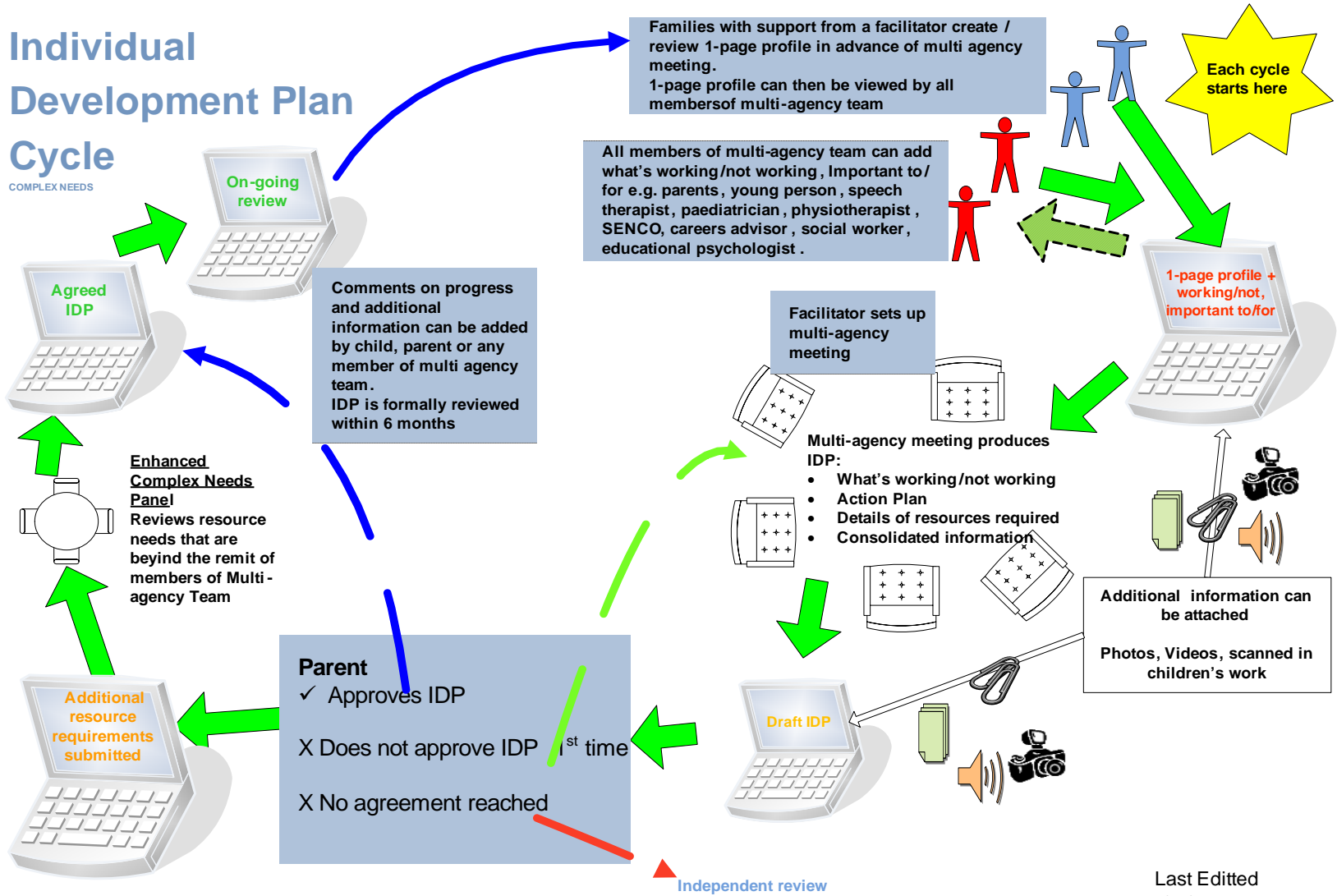


Last Edited
6/17/2010 10:13 AM

Llywodraeth Cynulliad Cymru
Welsh Assembly Government

Individual Development Plan Cycle

COMPLEX NEEDS



Last Edited
6/17/2010 10:17 AM



Llywodraeth Cynulliad Cymru
Welsh Assembly Government

What an IDP isn't...

- an electronic IEP, PEP, ILP etc
- a data dump
- a filing system
- fixed in time
- a substitute for meaningful interactive professional activity
- a description of separate provision for the individual



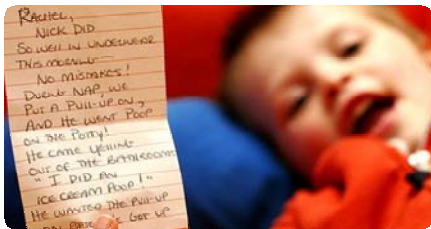
New approach

- Key differences
 - Quicker
 - More flexible
 - Focus on functional needs
 - Joint funding source



Going forward

- Pilots report to WAG in October 2011
- WAG have commissioned an independent action research review of all pilots
- Outcomes of the pilots will inform the decisions for future legislation



Llywodraeth Cynulliad Cymru
Welsh Assembly Government



Activity

- Read David's story
- Try to identify -
 - 4 things that are important to
 - 4 thing that are important for David
- What support would you recommend for David?

