

Community Focused Schools

Gartholwg CFS Cluster Worker
Samantha Chamberlain



STRONG HERITAGE | STRONG FUTURE
RHONDDA CYNON TAF
TREFTADAETH GADARN | DYFODOL SICR

What is a Community Focused school?

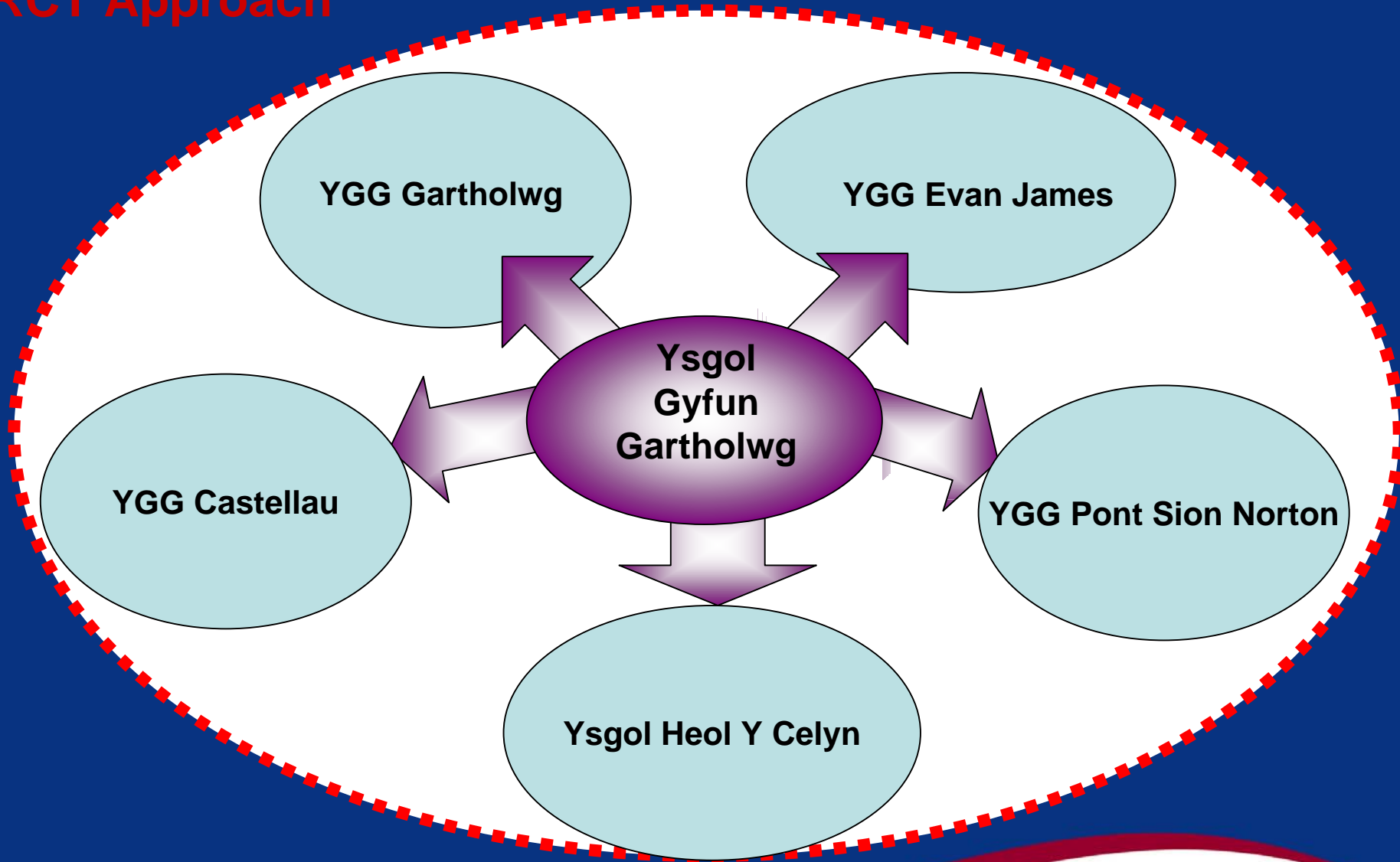
‘A community focused school is one that provides a range of services and activities, often beyond the school day, to help meet the needs of its pupils, their families and the wider community.

Community focused schools – Guidance circular, National Assembly for Wales, 2003 and 2005



STRONG HERITAGE | STRONG FUTURE
RHONDDA CYNON TAF
TREFTADAETH GADARN | DYFODOL SICR

RCT Approach



How the Welsh Language Anti-bullying Project came about.

- Identified the need
- Public Consultation
- School Councils
- Parents understanding



STRONG HERITAGE | STRONG FUTURE
RHONDDA CYNON TAF
TREFTADAETH GADARN | DYFODOL SICR

- **This initiative will:**

Offer appropriate and targeted support and services to children, young people, their families and the community within defined geographic areas.

- **The main source of funding will be from the Big Lottery via the ‘People and Places’ grant.**



STRONG HERITAGE | STRONG FUTURE
RHONDDA CYNON TAF
TREFTADAETH GADARN | DYFODOL SICR

Aims and Objectives

- **Production of a multipurpose Welsh Language Anti-bullying DVD resource.**
- **Provide an opportunity for in-depth work with both pupils and vulnerable people during the transition between Primary and Secondary School.**
- **Increase community awareness towards the various methods of bullying ongoing within the communities surrounding schools.**
- **Provide greater opportunities through multi-discipline working to encourage the exploration of topics relevant to families within their community.**
- **To encourage ownership by all involved in the project, thus making the school communities a better and safe place to live.**
- **Allowing participants to voice their own ideas and discuss openly any concerns they may have.**

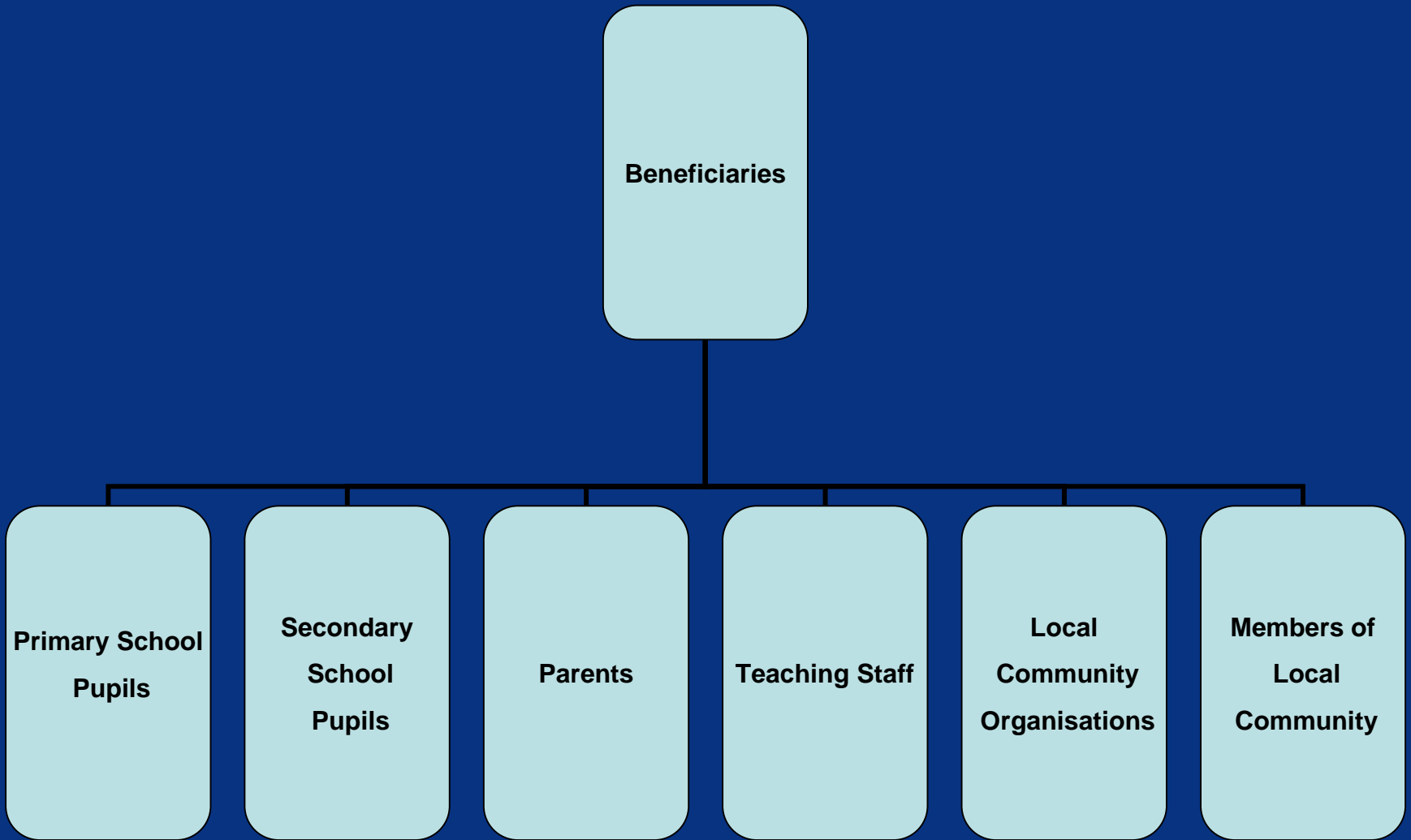


- **The Project is working towards:**

Drawing together a range of local partners to provide services to work towards common, agreed goals.



STRONG HERITAGE | STRONG FUTURE
RHONDDA CYNON TAF
TREFTADAETH GADARN | DYFODOL SICR



**Partnerships
and
Service
Providers**

NSPCC

Banardos

Bullies Out

**Cydradd
Cymru**

**South Wales
Police**

**Tantrwm
Film
Company**

**Welsh
Assembly
Government**

**Yr Urdd
'Welsh
Millenium
Centre'**



STRONG HERITAGE | STRONG FUTURE
RHONDDA CYNON TAF
TREFTADAETH GADARN | DYFODOL SICR

Project Outcomes

- To develop and produce a Welsh Medium Anti-bullying DVD Resource – with equal access to school pupils, parents, school staff and Local Community organisations.
- To provide opportunities for the cluster of schools to work in partnership with the wider communities whilst developing joint activities for the benefit of all.
- To engage with the wider community and the cluster of CFS through the development of a series of meetings/workshops which will increase knowledge of bullying behaviours and equality/diversity issues.
- To provide pupils, parents and school staff with the ability to develop new skills and gain new experiences.
- To facilitate the transition between primary and secondary school whilst improving communication, understanding and respect between age groups genders and cultural groups.



ACTIVITIES

- **School Workshops**
- **Community Information Session**
- **Marketing - Police 'Pact meeting'**
- **Competitions**
- **Community Exhibitions**
- **Production of the DVD Resource**



STRONG HERITAGE | STRONG FUTURE
RHONDDA CYNON TAF
TREFTADAETH GADARN | DYFODOL SICR

Preparing DVD Content

- **Welsh Millennium Centre**
- **5 x Workshops**
 1. **Script Writing**
 2. **Set Design**
 3. **Drama**
 4. **Make-up**
 5. **Filming**



Location Filming

- **Community locations - Parks, Corner Shops, Residential Estates, Rough Ground.**
- **Safety Zone – Community Safety Partnership**
- **Secondary School – Final Destination**



STRONG HERITAGE | STRONG FUTURE
RHONDDA CYNON TAF
TREFTADAETH GADARN | DYFODOL SICR

Monitoring/Evaluation

- **Various monitoring methods used for each activity within the project.**
- **Ongoing surveys to evaluate the effectiveness of each activity within the project.**
- **Final Evaluation Report.**



Cluster Arrangements Have Developed:

- Joint Committees
- Shared expertise
- Provide integrated services
- Expertise from other sectors
- Staff working together
- Joint services & use of facilities



STRONG HERITAGE | STRONG FUTURE
RHONDDA CYNON TAF
TREFTADAETH GADARN | DYFODOL SICR

**If you would like to find out more on
Community Focused Schools or the
Gartholwg Anti-bullying projects
please contact:**

Samanthachamberlain on 01443 219589

Email:

Samanthachamberlain@campwsgartholwg.org.uk



STRONG HERITAGE | STRONG FUTURE
RHONDDA CYNON TAF
TREFTADAETH GADARN | DYFODOL SICR

What we are learning

- This approach has added the capacity to join initiatives together with a common sense of purpose
- That consulting individuals and groups creates ownership of activities and reduces duplication of effort
- Communication
- Cost – intervention at key points can drive change

